

Respiratory illness report

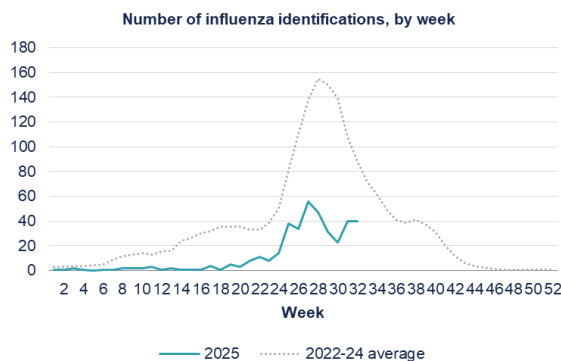
Waitaha Canterbury, Te Tai o Poutini West Coast and South Canterbury Districts
Week 32, ending Thursday 14 August 2025

Key points

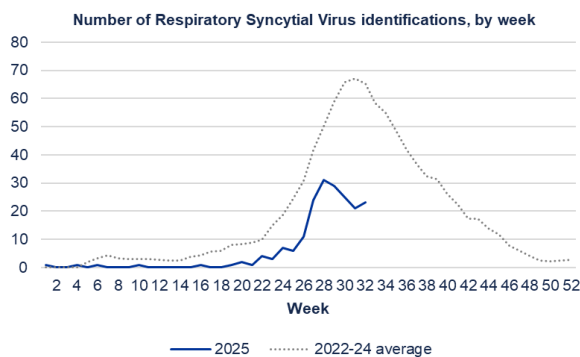
- There was no change in the total number of Influenza identifications in Canterbury in the last reporting week.
- Influenza and RSV identifications in Canterbury are low compared to the same time in previous years.
- Four cases of confirmed/probable pertussis were reported in Canterbury, and one case in South Canterbury, for the week ending 8 August.

Waitaha Canterbury District positive laboratory influenza and RSV identifications

Data provided by Canterbury Health Laboratories, Health New Zealand



Influenza type	This week	Last week	2025 total (%)
A (untyped)	25	30	262 (68%)
B	15	10	123 (32%)



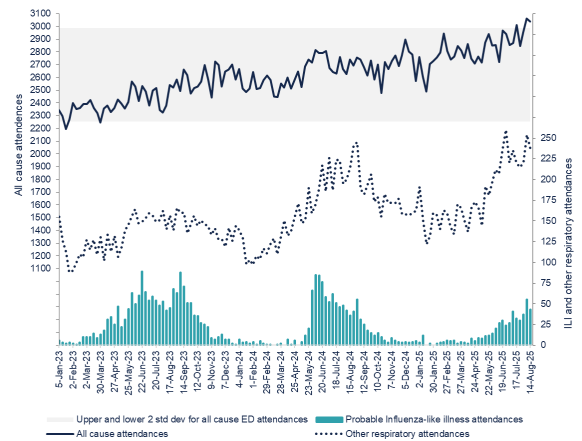
New self-reported COVID-19 cases

Data extracted from EpiSurv

Week	Canterbury	South Canterbury	West Coast
29	82	3	2
30	68	4	6
31	75	3	5
32	60	8	6

Christchurch Hospital ED attendance

Data provided by Business Intelligence, Health New Zealand



PHF Science respiratory illness dashboards

The following data can be viewed on the PHR Science (formerly ESR) **respiratory illness** dashboard (www.phfscience.nz/digital-library/respiratory-illness-dashboard/):

- Community influenza-like illness (ILI) activity—national and local trends
 - HealthLine ILI-related call rates
 - FluTracking participant fever and cough symptoms.
- Viruses detected through sentinel and non-sentinel testing.

The PHF Science **pertussis** dashboard and intelligence reports are here: www.phfscience.nz/digital-library/pertussis-dashboard/

Weekly "likely respiratory infection"-related calls to Whakarongorau Aotearoa

