

Respiratory illness report

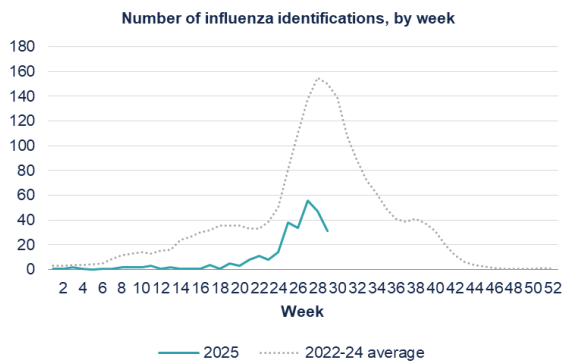
Waitaha Canterbury, Te Tai o Poutini West Coast and South Canterbury Districts
Week 29, ending Thursday 24 July 2025

Key points

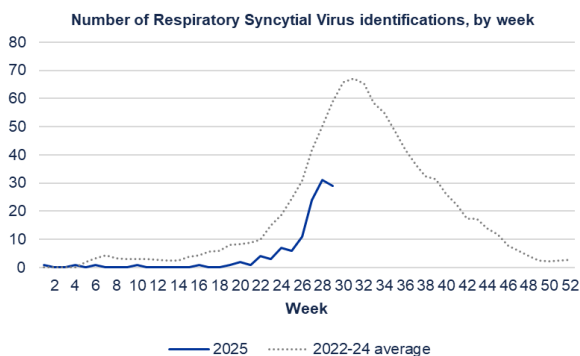
- Influenza and RSV identifications in Canterbury decreased in the last reporting week.
- Influenza and RSV identifications in Canterbury are low compared to the same time in previous years.
- Self-reported COVID-19 cases decreased in the last two reporting weeks in Canterbury, South Canterbury and West Coast.
- Nine cases of confirmed/probable pertussis were reported in Canterbury for the week ending 18 July.

Waitaha Canterbury District positive laboratory influenza and RSV identifications

Data provided by Canterbury Health Laboratories, Health New Zealand



Influenza type	This week	Last week	2025 total (%)
A (untyped)	22	37	191 (68%)
B	9	10	91 (32%)



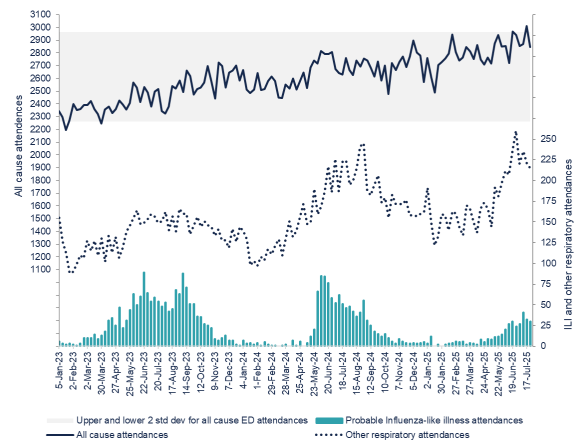
New self-reported COVID-19 cases

Data extracted from EpiSurv

Week	Canterbury	South Canterbury	West Coast
26	152	10	3
27	122	10	11
28	102	5	3
29	82	3	2

Christchurch Hospital ED attendance

Data provided by Business Intelligence, Health New Zealand



PHF Science respiratory illness dashboards

The following data can be viewed on the PHR Science (formerly ESR) **respiratory illness** dashboard (www.phfscience.nz/digital-library/respiratory-illness-dashboard/):

- Community influenza-like illness (ILI) activity—national and local trends
 - HealthLine ILI-related call rates
 - FluTracking participant fever and cough symptoms.
- Viruses detected through sentinel and non-sentinel testing.

The PHF Science **pertussis** dashboard and intelligence reports are here: www.phfscience.nz/digital-library/pertussis-dashboard/

Weekly "likely respiratory infection"-related calls to Whakarongorau Aotearoa

