

# Respiratory illness report

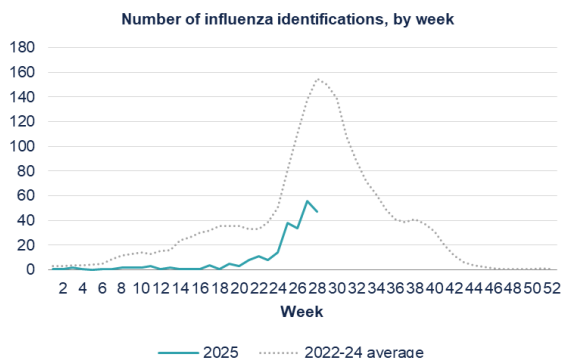
Waitaha Canterbury, Te Tai o Poutini West Coast and South Canterbury Districts  
Week 28, ending Thursday 17 July 2025

## Key points

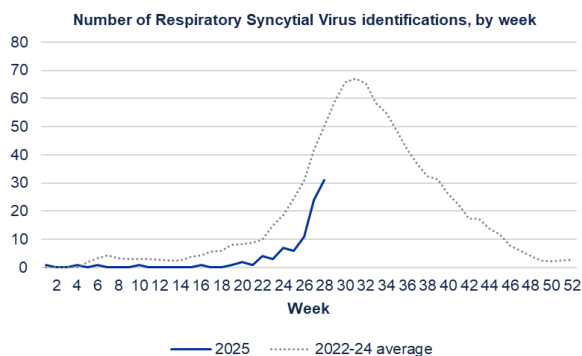
- RSV identifications in Canterbury increased in the last three reporting weeks.
- Influenza and RSV identifications in Canterbury are low compared to the same time in previous years.
- Self-reported COVID-19 cases decreased in the last reporting week in Canterbury, South Canterbury and West Coast.

## Waitaha Canterbury District positive laboratory influenza and RSV identifications

Data provided by Canterbury Health Laboratories, Health New Zealand



Influenza type	This week	Last week	2025 total (%)
A (untyped)	37	40	169 (67%)
B	10	16	82 (33%)



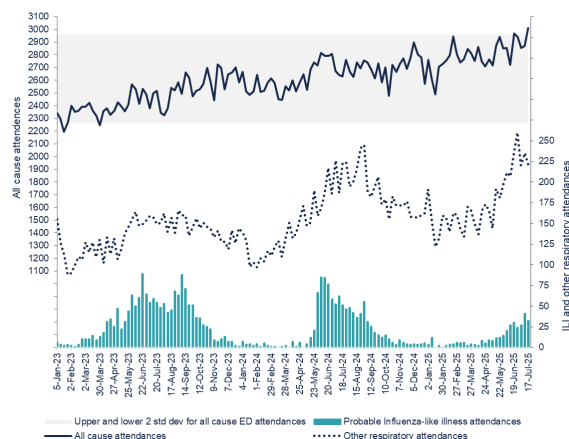
## New self-reported COVID-19 cases

Data extracted from EpiSurv

Week	Canterbury	South Canterbury	West Coast
25	178	36	2
26	152	10	3
27	122	10	11
28	102	5	3

## Christchurch Hospital ED attendance

Data provided by Business Intelligence, Health New Zealand



## PHF Science respiratory illness dashboards

The following data can be viewed on the PHR Science (formerly ESR) **respiratory illness** dashboard ([www.phfscience.nz/digital-library/respiratory-illness-dashboard/](http://www.phfscience.nz/digital-library/respiratory-illness-dashboard/)):

- Community influenza-like illness (ILI) activity—national and local trends
  - HealthLine ILI-related call rates
  - FluTracking participant fever and cough symptoms.
- Viruses detected through sentinel and non-sentinel testing.

The PHF Science **pertussis** dashboard and intelligence reports are here: [www.phfscience.nz/digital-library/pertussis-dashboard/](http://www.phfscience.nz/digital-library/pertussis-dashboard/)

## Weekly "likely respiratory infection"-related calls to Whakarongorau Aotearoa

