

Respiratory illness report

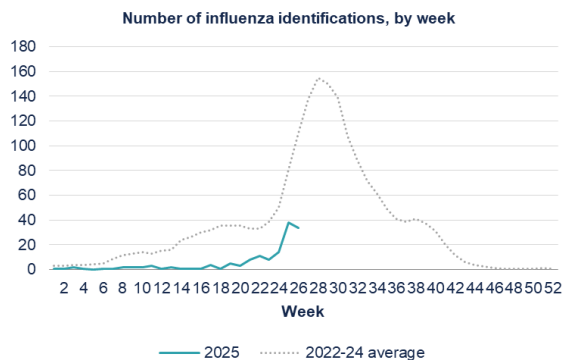
Waitaha Canterbury, Te Tai o Poutini West Coast and South Canterbury Districts
Week 26, ending Thursday 3 July 2025

Key points

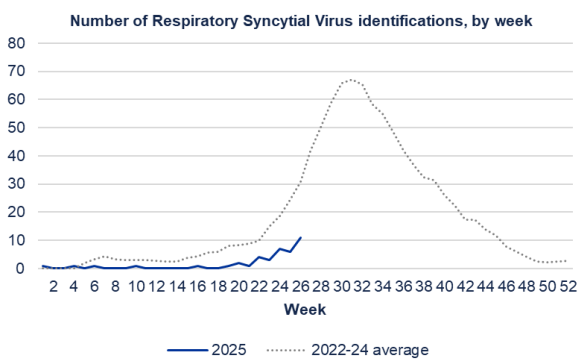
- RSV identifications in Canterbury increased in the last reporting week.
- Influenza and RSV identifications in Canterbury are low compared to the same time in previous years.
- Overall, influenza A is the most common influenza type in Canterbury so far this year.
- Self-reported COVID-19 cases decreased in the last reporting week in Canterbury and South Canterbury.

Waitaha Canterbury District positive laboratory influenza and RSV identifications

Data provided by Canterbury Health Laboratories, Health New Zealand



| Influenza type | This week | Last week | 2025 total (%) |
|----------------|-----------|-----------|----------------|
| A (untyped) | 24 | 21 | 92 (62%) |
| B | 10 | 17 | 56 (38%) |



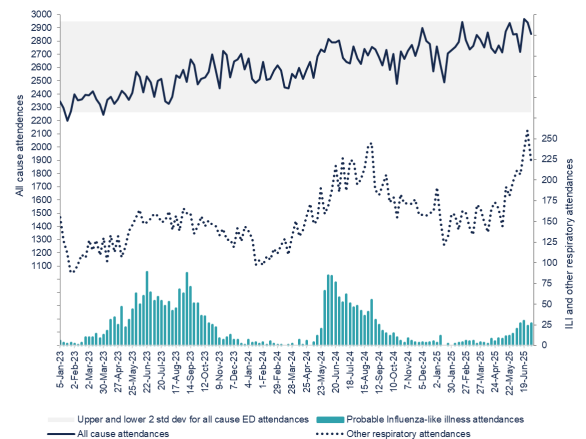
New self-reported COVID-19 cases

Data extracted from EpiSurv

| Week | Canterbury | South Canterbury | West Coast |
|------|------------|------------------|------------|
| 23 | 126 | 7 | 0 |
| 24 | 133 | 15 | 1 |
| 25 | 178 | 36 | 2 |
| 26 | 152 | 10 | 3 |

Christchurch Hospital ED attendance

Data provided by Business Intelligence, Health New Zealand



PHF Science respiratory illness dashboards

The following data can be viewed on the PHR Science (formerly ESR) **respiratory illness** dashboard (<https://www.phfscience.nz/digital-library/respiratory-illness-dashboard/>):

- Community influenza-like illness (ILI) activity—national and local trends
 - HealthLine ILI-related call rates
 - FluTracking participant fever and cough symptoms.
- Viruses detected through sentinel and non-sentinel testing.

The PHF Science **pertussis** dashboard and intelligence reports are here: <https://www.phfscience.nz/digital-library/pertussis-dashboard/>

Weekly "likely respiratory infection"-related calls to Whakarongorau Aotearoa

