

Respiratory illness report

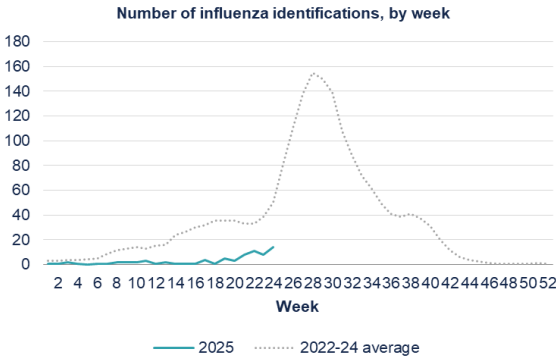
Waitaha Canterbury, Te Tai o Poutini West Coast and South Canterbury Districts
Week 24, ending Thursday 19 June 2025

Key points

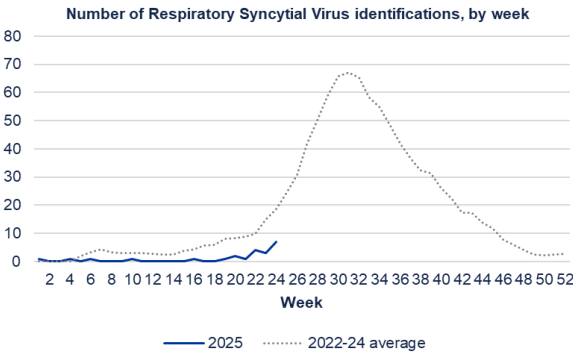
- Influenza and RSV identifications in Canterbury are low compared to the same time in previous years.
- Influenza and RSV identifications increased in the last reporting week.
- Overall, influenza A is the most common influenza type in Canterbury so far this year.
- There were 5 cases of confirmed/probable pertussis in Canterbury, and 5 on the West Coast, for the week ending 13 June.

Waitaha Canterbury District positive laboratory influenza and RSV identifications

Data provided by Canterbury Health Laboratories, Health New Zealand



Influenza type	This week	Last week	2025 total (%)
A (untyped)	9	5	47 (62%)
B	5	3	29 (38%)



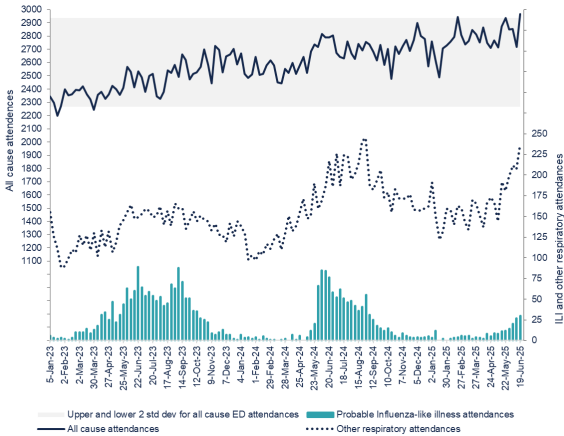
New self-reported COVID-19 cases

Data extracted from EpiSurv

Week	Canterbury	South Canterbury	West Coast
21	68	21	10
22	136	15	3
23	126	7	0
24	133	15	1

Christchurch Hospital ED attendance

Data provided by Business Intelligence, Health New Zealand



ESR respiratory illness dashboards

The following data can be viewed on the ESR **respiratory illness** dashboard (www.esr.cri.nz/digital-library/respiratory-illness-dashboard/):

- Community influenza-like illness (ILI) activity—national and local trends
 - HealthLine ILI-related call rates
 - FluTracking participant fever and cough symptoms.
- Viruses detected through sentinel and non-sentinel testing.

The ESR **pertussis** dashboard and intelligence reports are here: www.esr.cri.nz/digital-library/pertussis-dashboard/

Weekly "likely respiratory infection"-related calls to Whakarongorau Aotearoa

