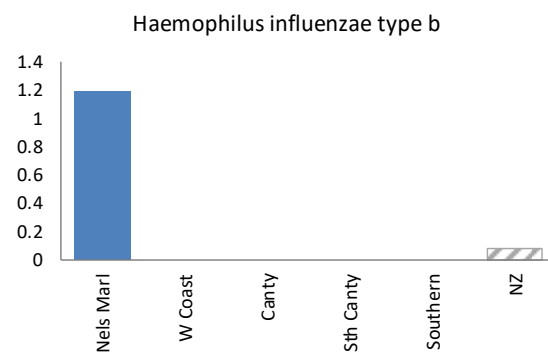
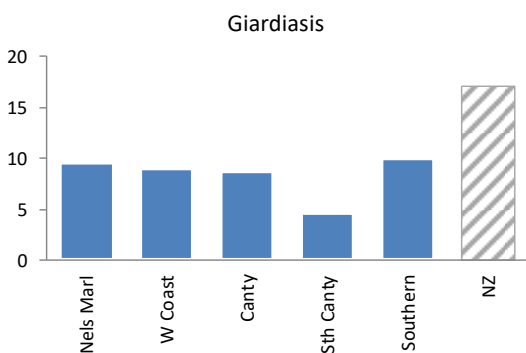
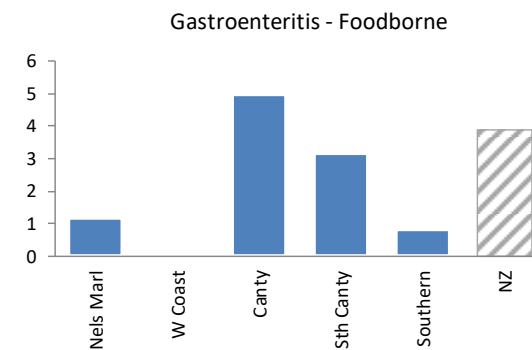
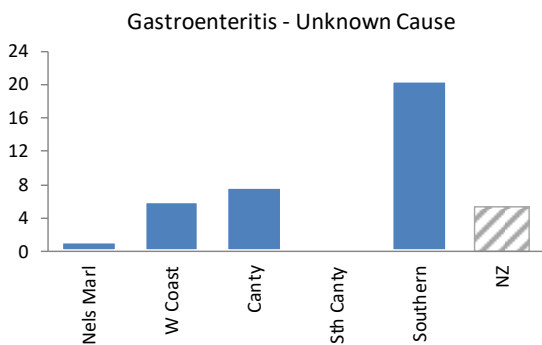
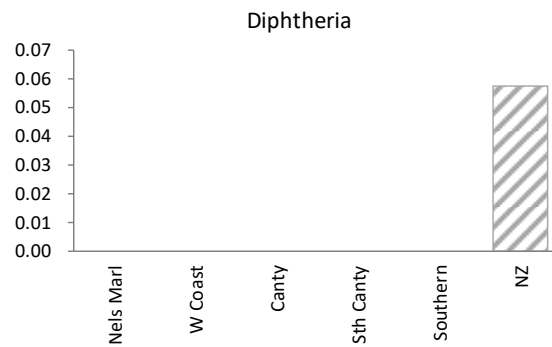
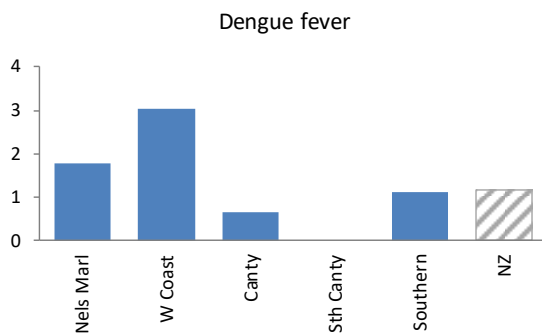
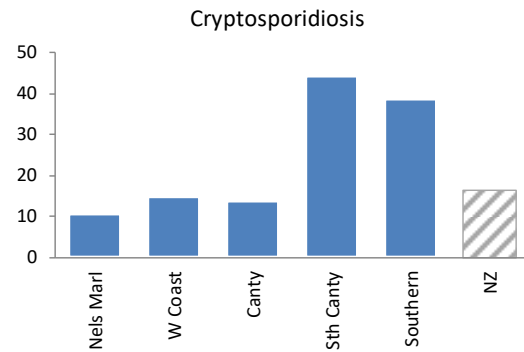
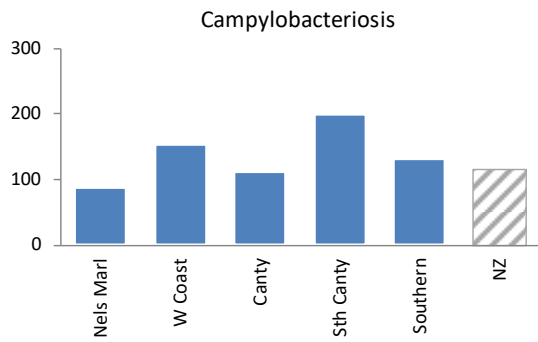


Te Waipounamu Notifiable Disease Rates by District

Notification Rates (per 100,000 population) By District for the 12 months to January 2024

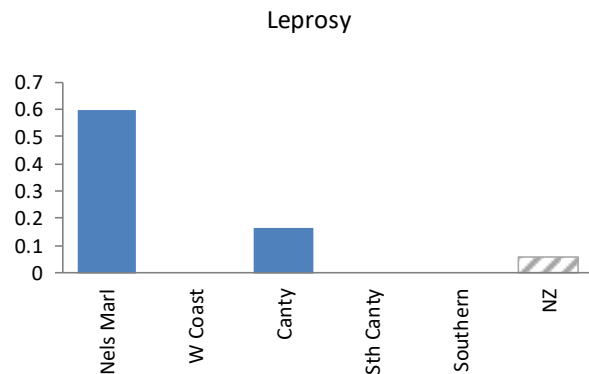
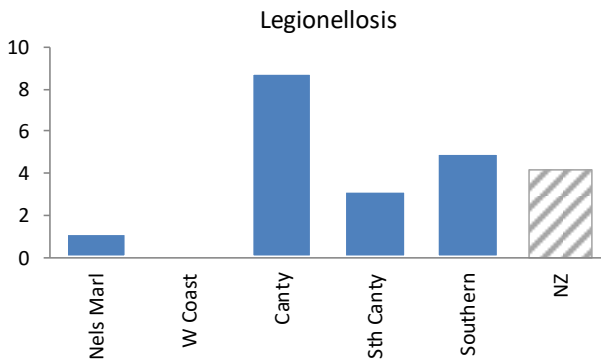
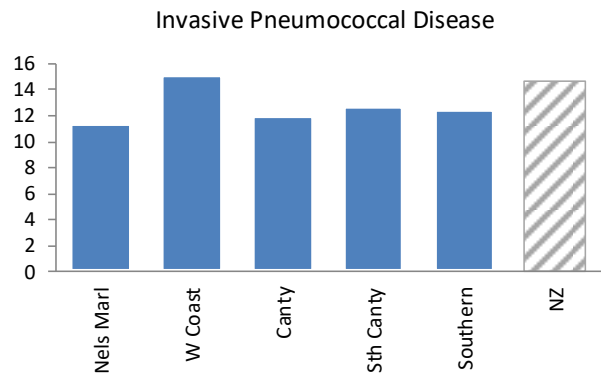
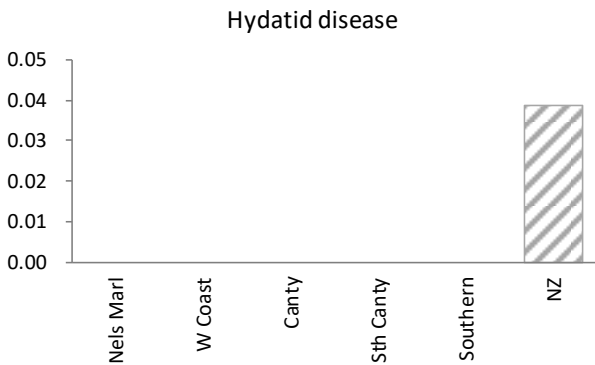
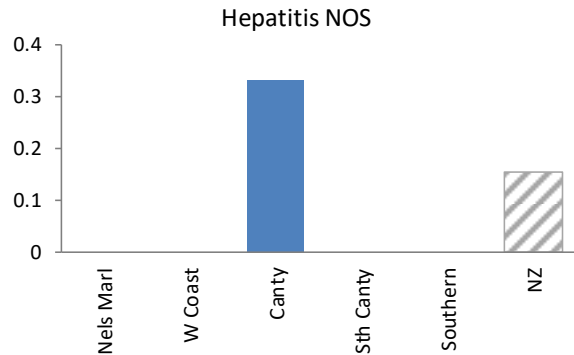
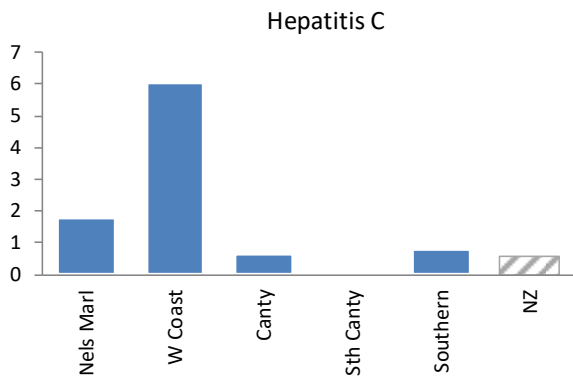
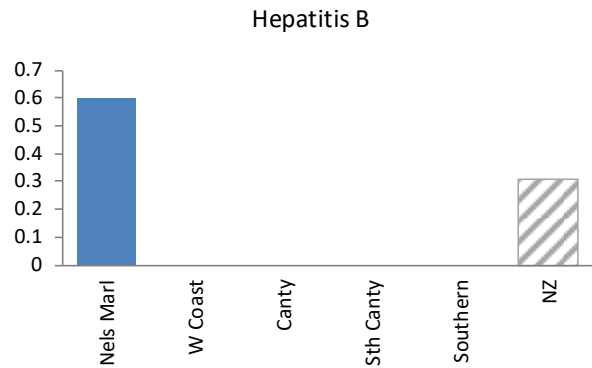
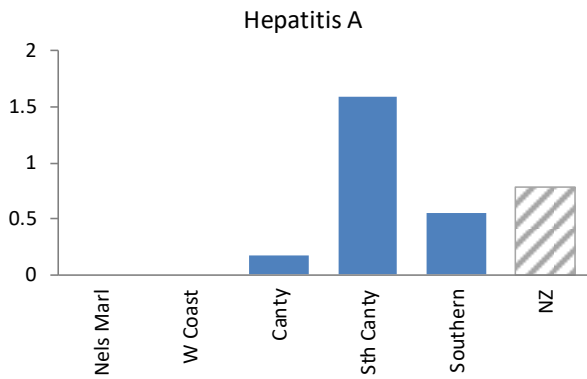
[EpiSurv report N010 extracted 0810 hrs on 27 March 2024]



Te Waipounamu Notifiable Disease Rates by District

Notification Rates (per 100,000 population) By District for the 12 months to January 2024

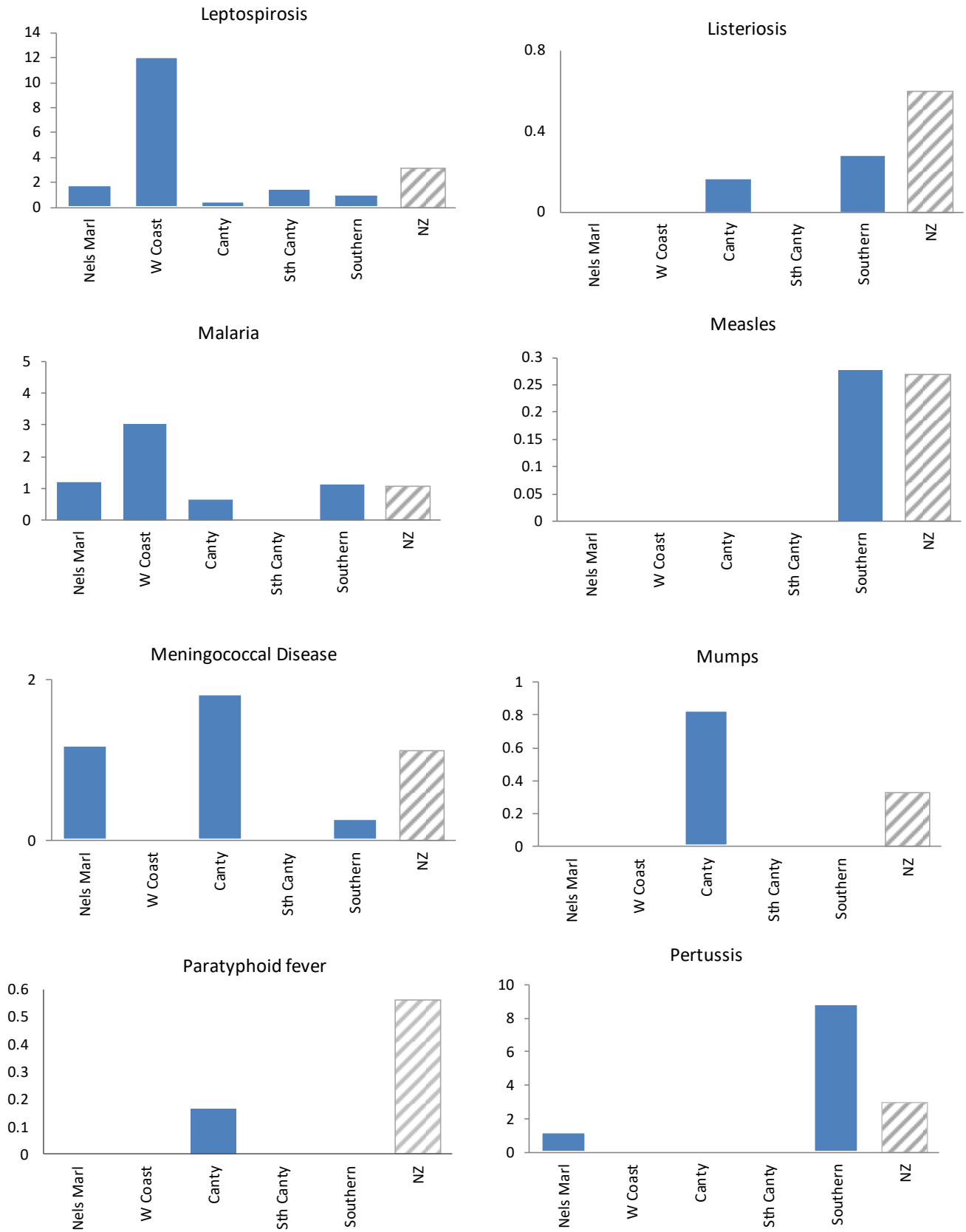
[EpiSurv report N010 extracted 0810 hrs on 27 March 2024]



Te Waipounamu Notifiable Disease Rates by District

Notification Rates (per 100,000 population) By District for the 12 months to January 2024

[EpiSurv report N010 extracted 0810 hrs on 27 March 2024]

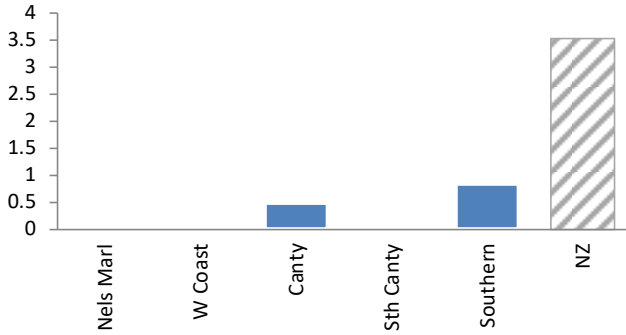


Te Waipounamu Notifiable Disease Rates by District

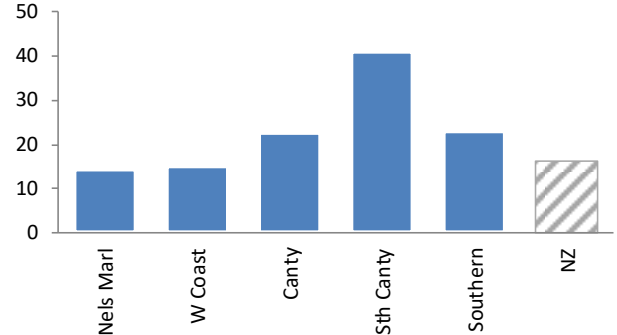
Notification Rates (per 100,000 population) By District for the 12 months to January 2024

[EpiSurv report N010 extracted 0810 hrs on 27 March 2024]

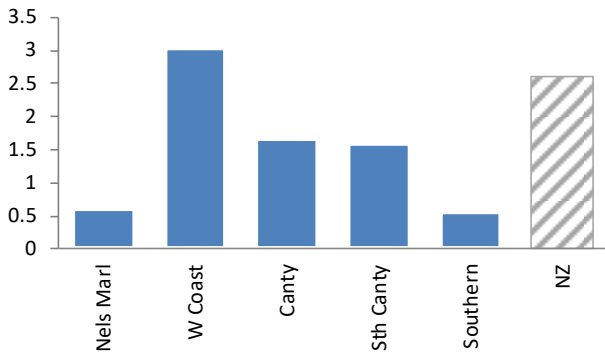
Rheumatic Fever - Initial Attack



Salmonellosis



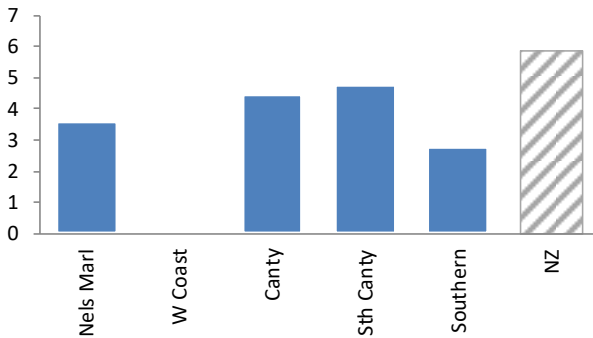
Shigellosis



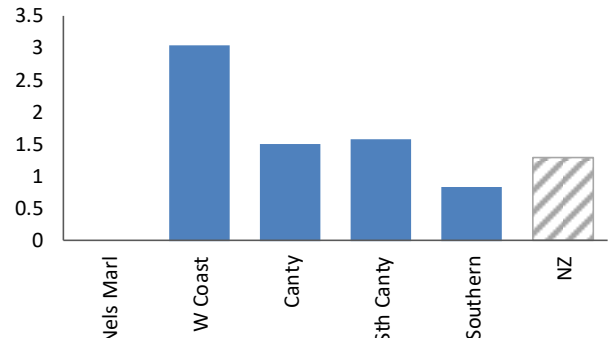
Toxic Shellfish Poisoning



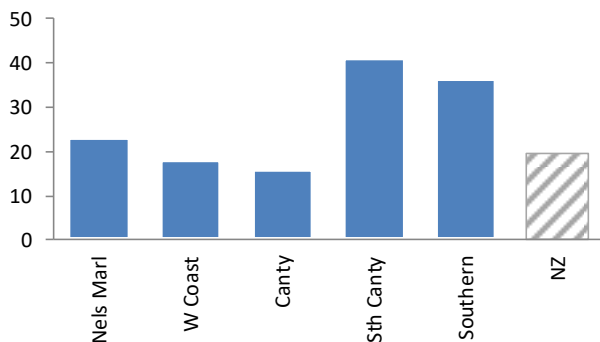
Tuberculosis - new case



Typhoid fever



VTEC



Yersiniosis

