

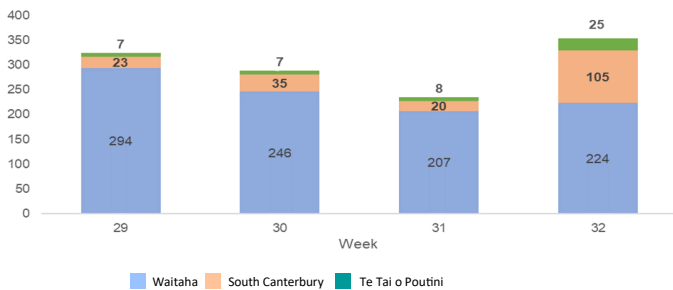
Key points

- Total influenza identifications decreased in the last three reporting weeks in Waitaha Canterbury.
- Influenza A continues to predominate.
- RSV identifications remained stable in the last reporting week in Waitaha Canterbury.
- Reported COVID-19 case numbers increased in the last reporting week in all Districts, with notable increases in South Canterbury and Te Tai o Poutini West Coast.

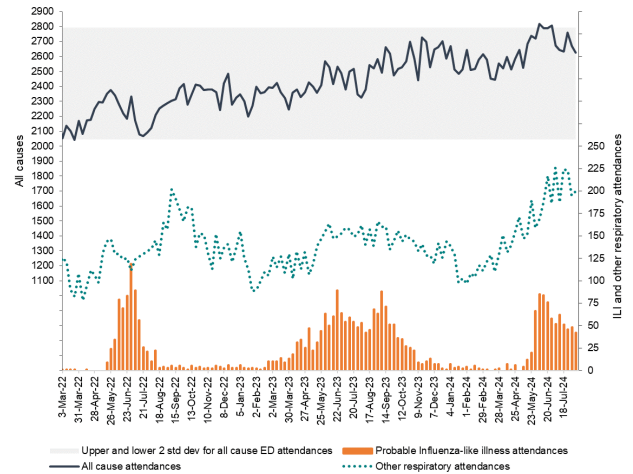
Waitaha Canterbury District positive influenza identifications*

Influenza type	This week	Last week	2024 total (%)
A (untyped)	63	88	1385 (99.2%)
B	1	0	11 (0.8%)

New COVID-19 cases, by week and district†

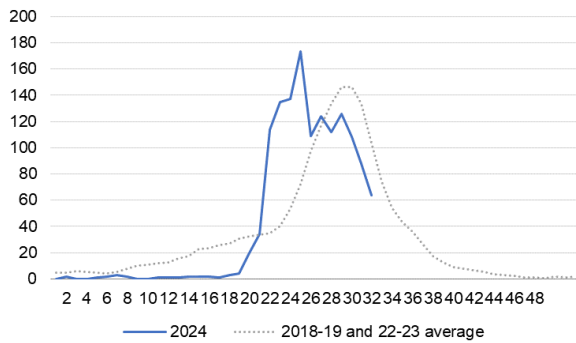


Christchurch Hospital Emergency Department attendance

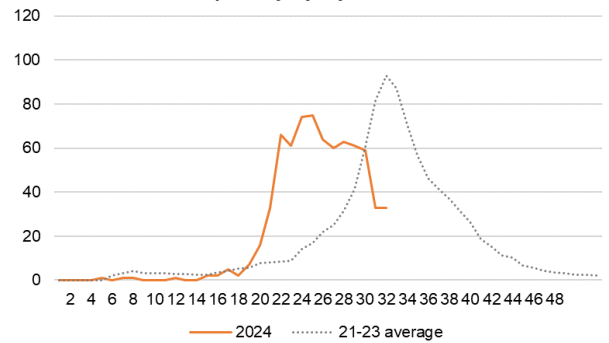


Waitaha Canterbury District positive laboratory influenza and RSV identifications, by week*

Influenza



Respiratory Syncytial Virus



ESR respiratory illness dashboard

The following data can be viewed on the ESR respiratory illness dashboard, which is updated weekly (www.esr.cri.nz/digital-library/respiratory-illness-dashboard/):

- Community influenza-like illness (ILI) activity—national and local trends:
 - HealthStat General Practice ILI consultation rates.
 - HealthLine ILI-related call rates.
 - FluTracking participant fever and cough symptoms.
- Viruses detected through sentinel and non-sentinel testing.

* Influenza and RSV identifications for Waitaha Canterbury District are provided by Canterbury Health Laboratories (CHL), and may include data from Ashburton Hospital and Te Tai o Poutini District. Note 2020 and 2021 data were not included in historical averages due to no influenza identifications in the community during the reporting period.

† Includes imported and locally acquired self-reported cases.