

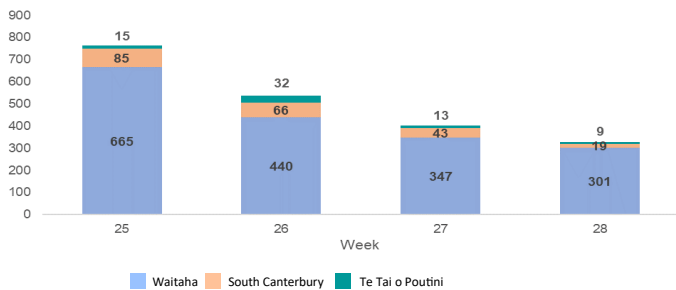
Key points

- Total influenza identifications decreased slightly in the last reporting week in Waitaha Canterbury.
- Influenza A continues to predominate.
- RSV identifications are higher than average for this time of year in Waitaha Canterbury.
- Reported COVID-19 case numbers decreased in the last two reporting weeks in Waitaha Canterbury, South Canterbury and Te Tai o Poutini West Coast.

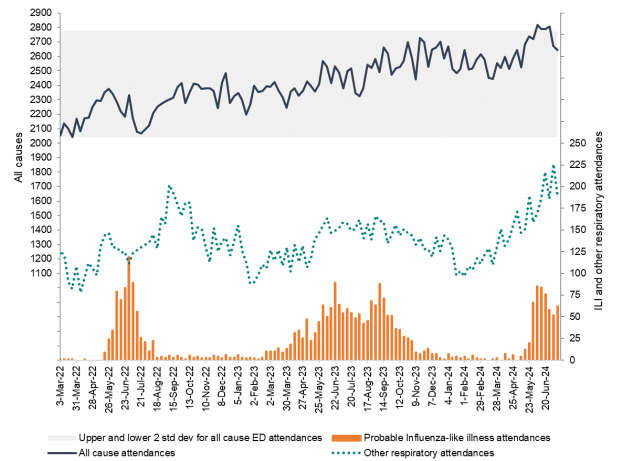
Waitaha Canterbury District positive influenza identifications*

Influenza type	This week	Last week	2024 total (%)
A (untyped)	112	123	1000 (99.0%)
B	0	1	10 (1.0%)

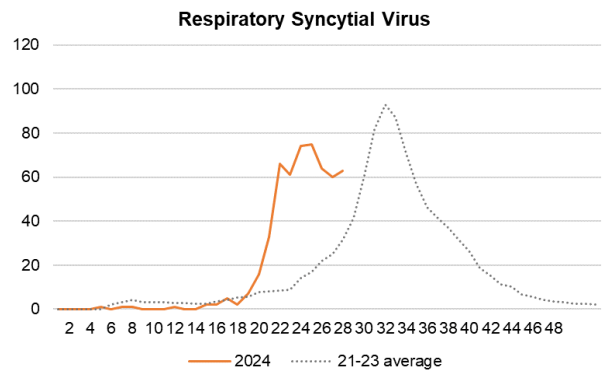
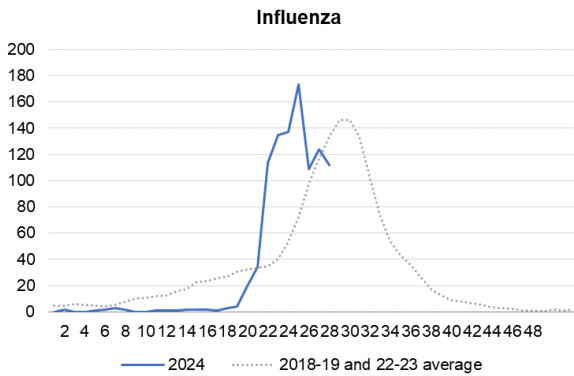
New COVID-19 cases, by week and district†



Christchurch Hospital Emergency Department attendance



Waitaha Canterbury District positive laboratory influenza and RSV identifications, by week*



ESR respiratory illness dashboard

The following data can be viewed on the ESR respiratory illness dashboard, which is updated weekly (www.esr.cri.nz/digital-library/respiratory-illness-dashboard/):

- Community influenza-like illness (ILI) activity—national and local trends:
 - HealthStat General Practice ILI consultation rates.
 - HealthLine ILI-related call rates.
 - FluTracking participant fever and cough symptoms.
- Viruses detected through sentinel and non-sentinel testing.

* Influenza and RSV identifications for Waitaha Canterbury District are provided by Canterbury Health Laboratories (CHL), and may include data from Ashburton Hospital and Te Tai o Poutini District. Note 2020 and 2021 data were not included in historical averages due to no influenza identifications in the community during the reporting period.

† Includes imported and locally acquired self-reported cases.