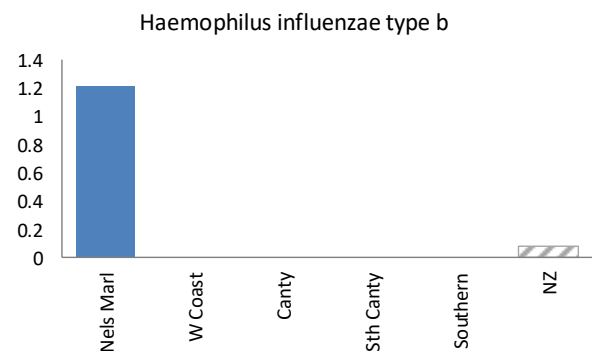
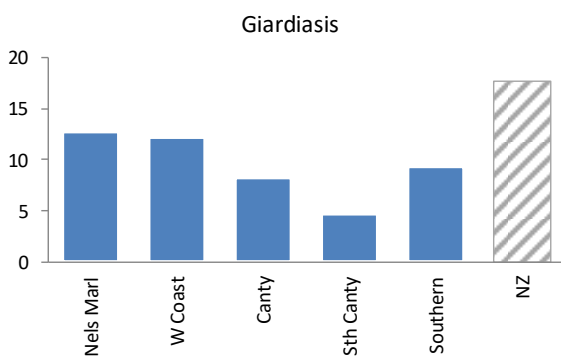
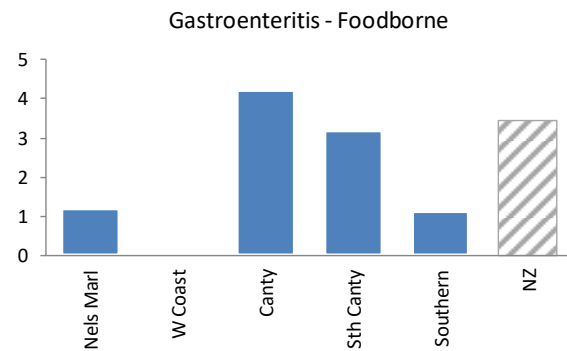
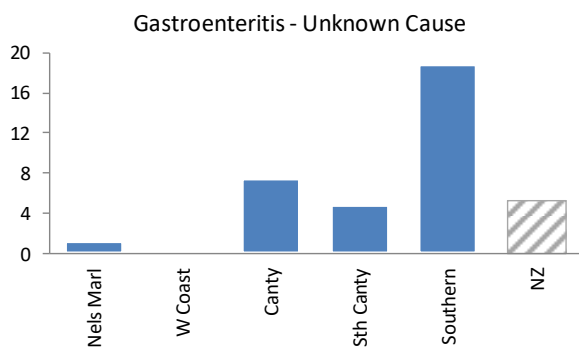
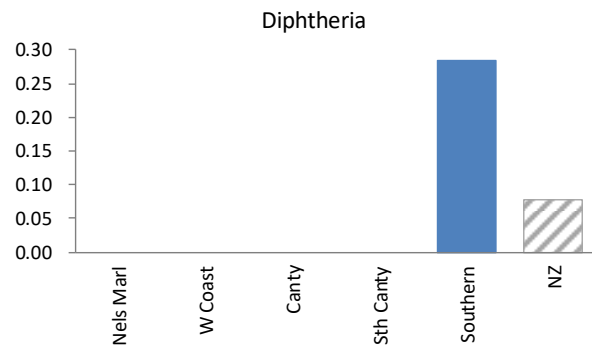
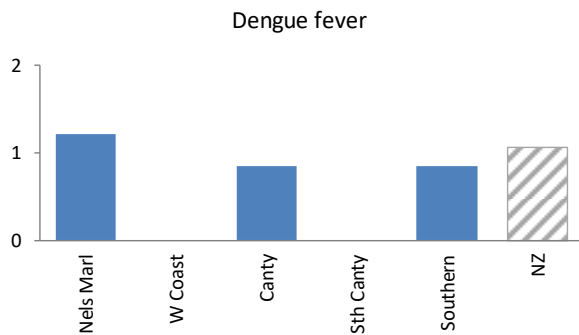
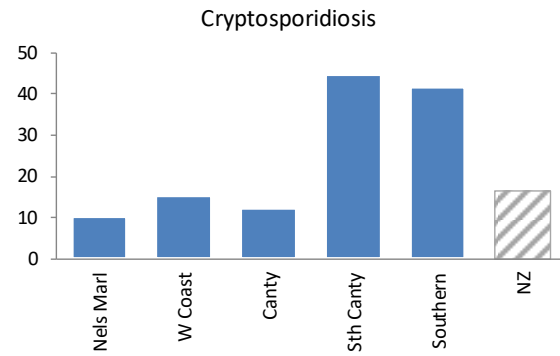
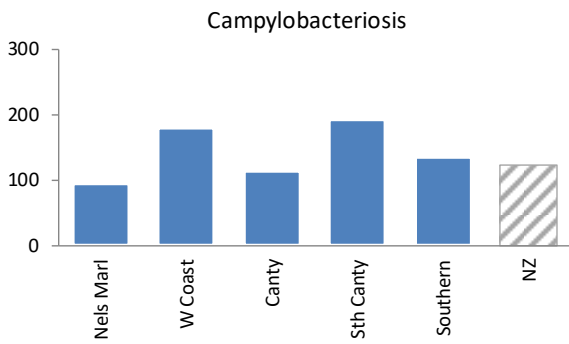


## Te Waipounamu Notifiable Disease Rates by District

Notification Rates (per 100,000 population) By District for the 12 months to November 2023

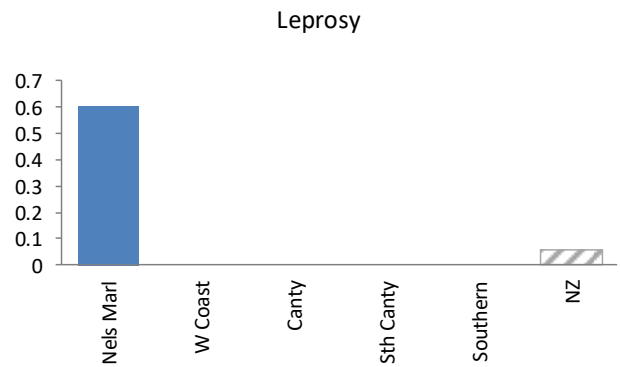
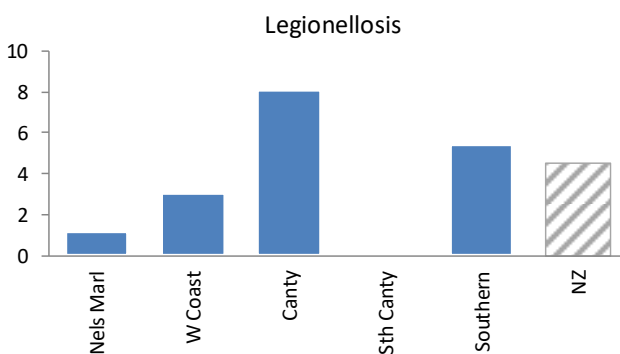
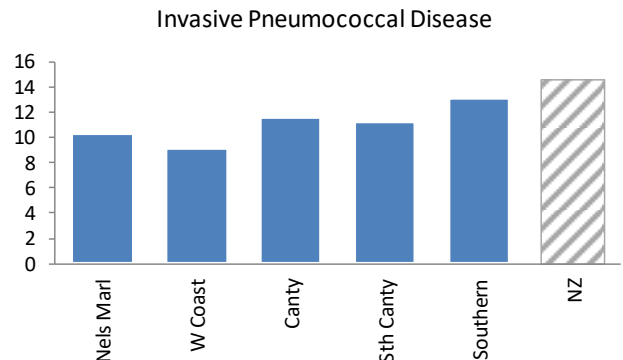
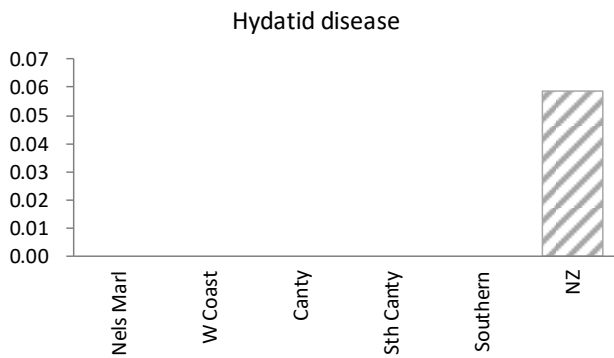
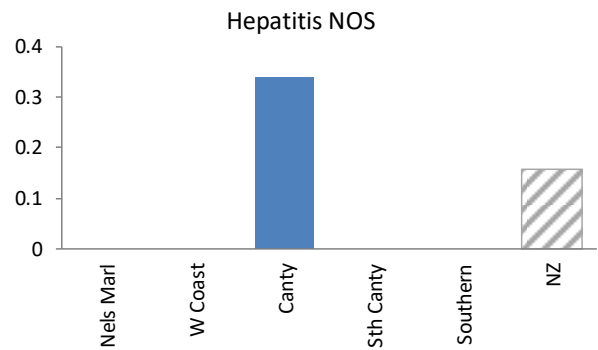
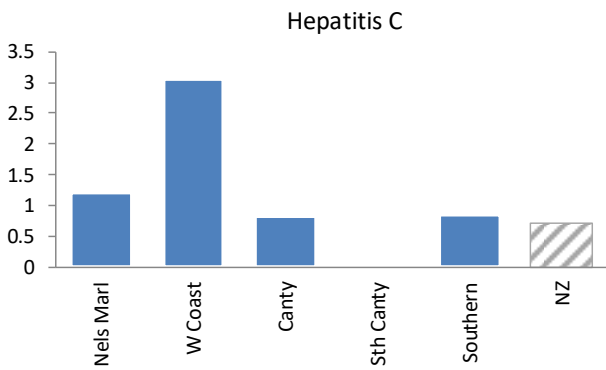
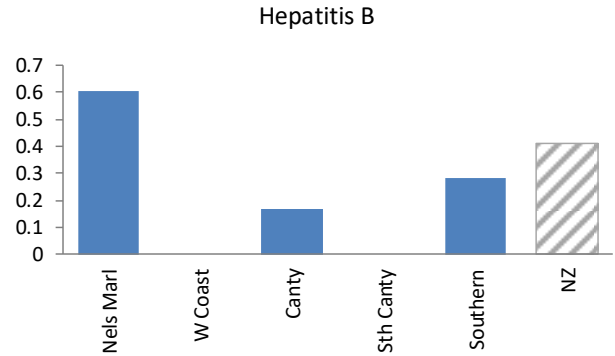
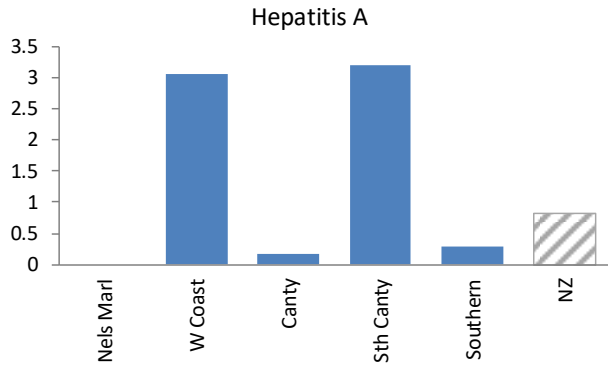
[EpiSurv report N010 extracted 1400 hrs on 5 December 2023]



# Te Waipounamu Notifiable Disease Rates by District

Notification Rates (per 100,000 population) By District for the 12 months to November 2023

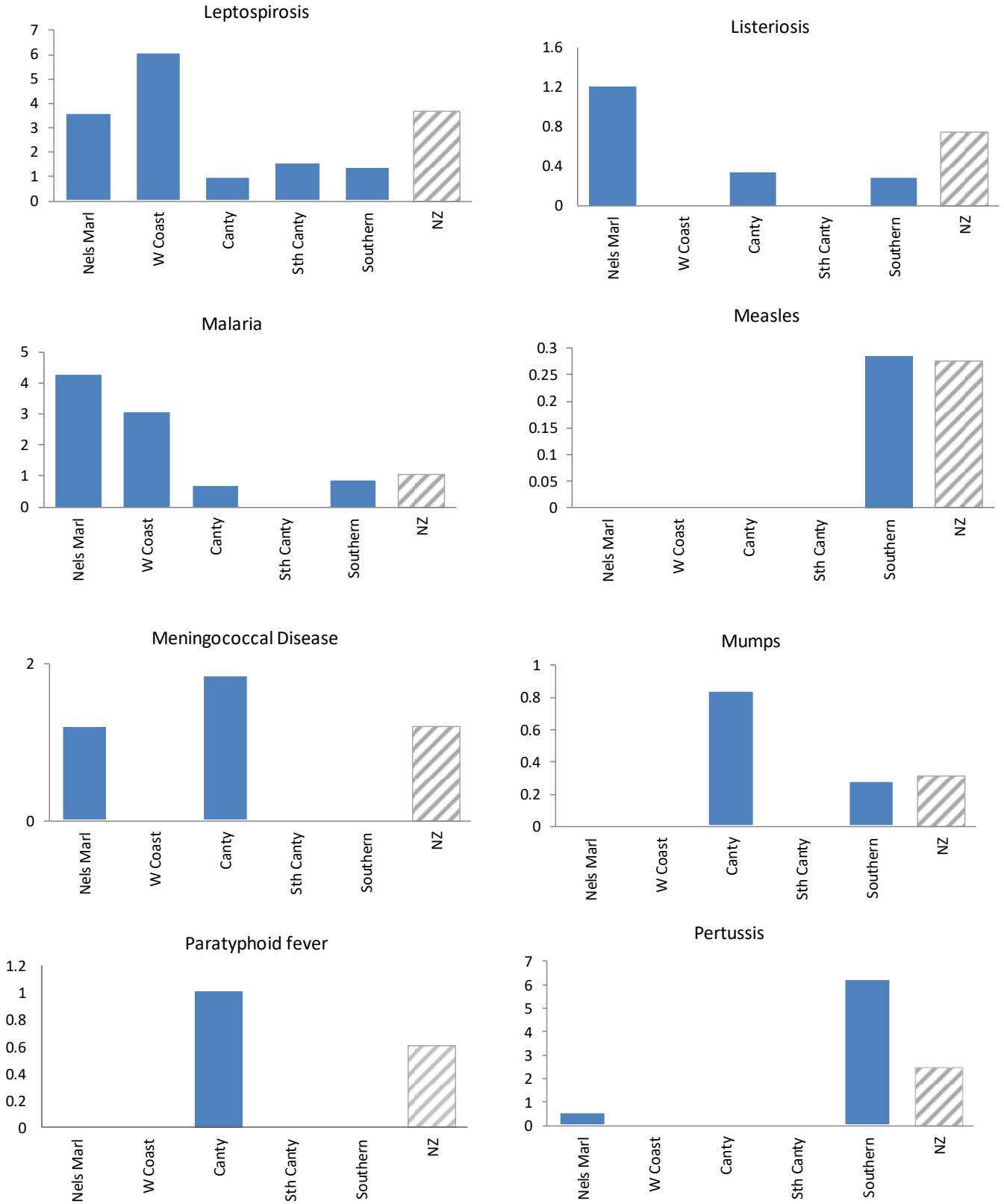
[EpiSurv report N010 extracted 1400 hrs on 5 December 2023]



# Te Waipounamu Notifiable Disease Rates by District

Notification Rates (per 100,000 population) By District for the 12 months to November 2023

[EpiSurv report N010 extracted 1400 hrs on 5 December 2023]

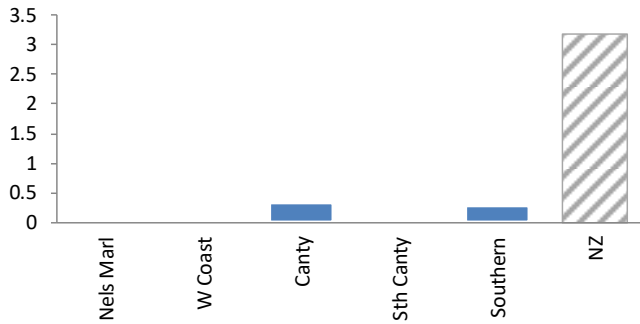


# Te Waipounamu Notifiable Disease Rates by District

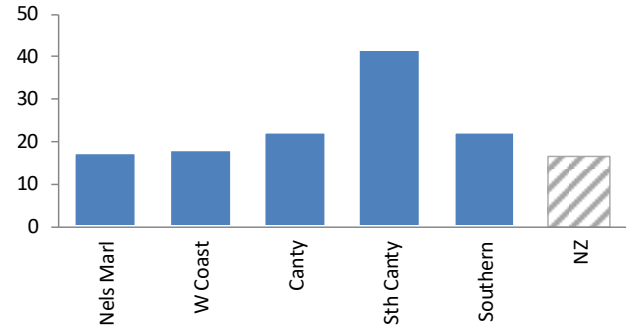
Notification Rates (per 100,000 population) By District for the 12 months to November 2023

[EpiSurv report N010 extracted 1400 hrs on 5 December 2023]

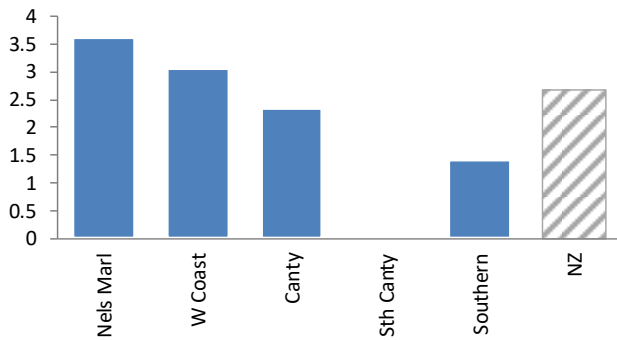
Rheumatic Fever - Initial Attack



Salmonellosis



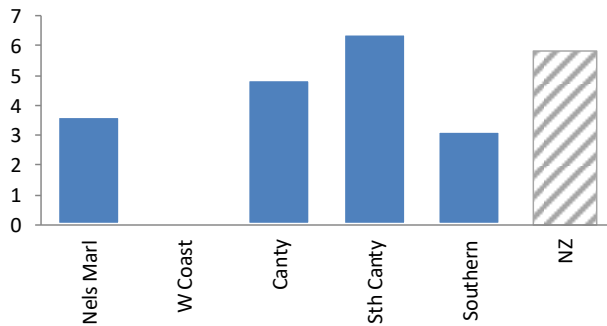
Shigellosis



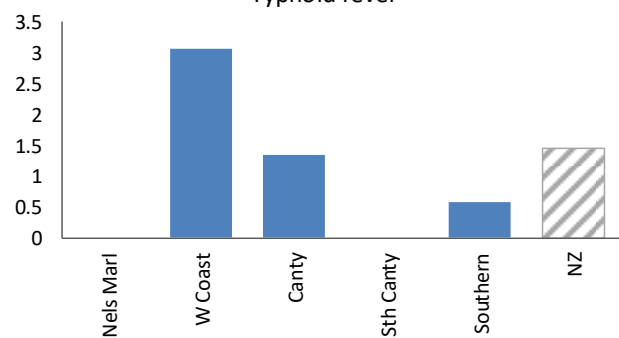
Toxic Shellfish Poisoning



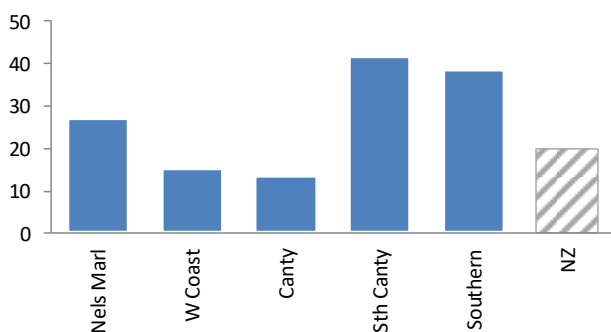
Tuberculosis - new case



Typhoid fever



VTEC



Yersiniosis

