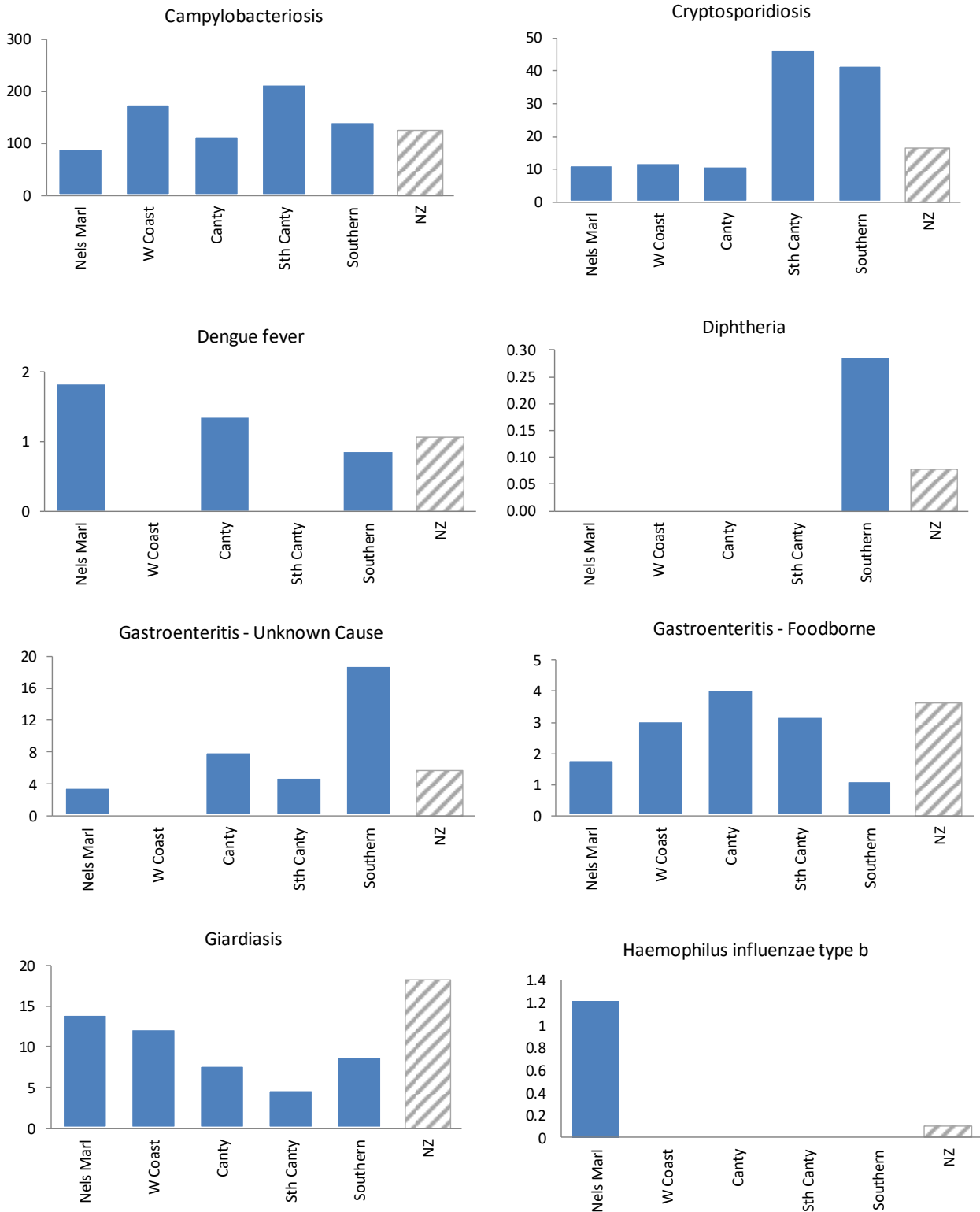


Te Waipounamu Notifiable Disease Rates by District

Notification Rates (per 100,000 population) By District for the 12 months to October 2023

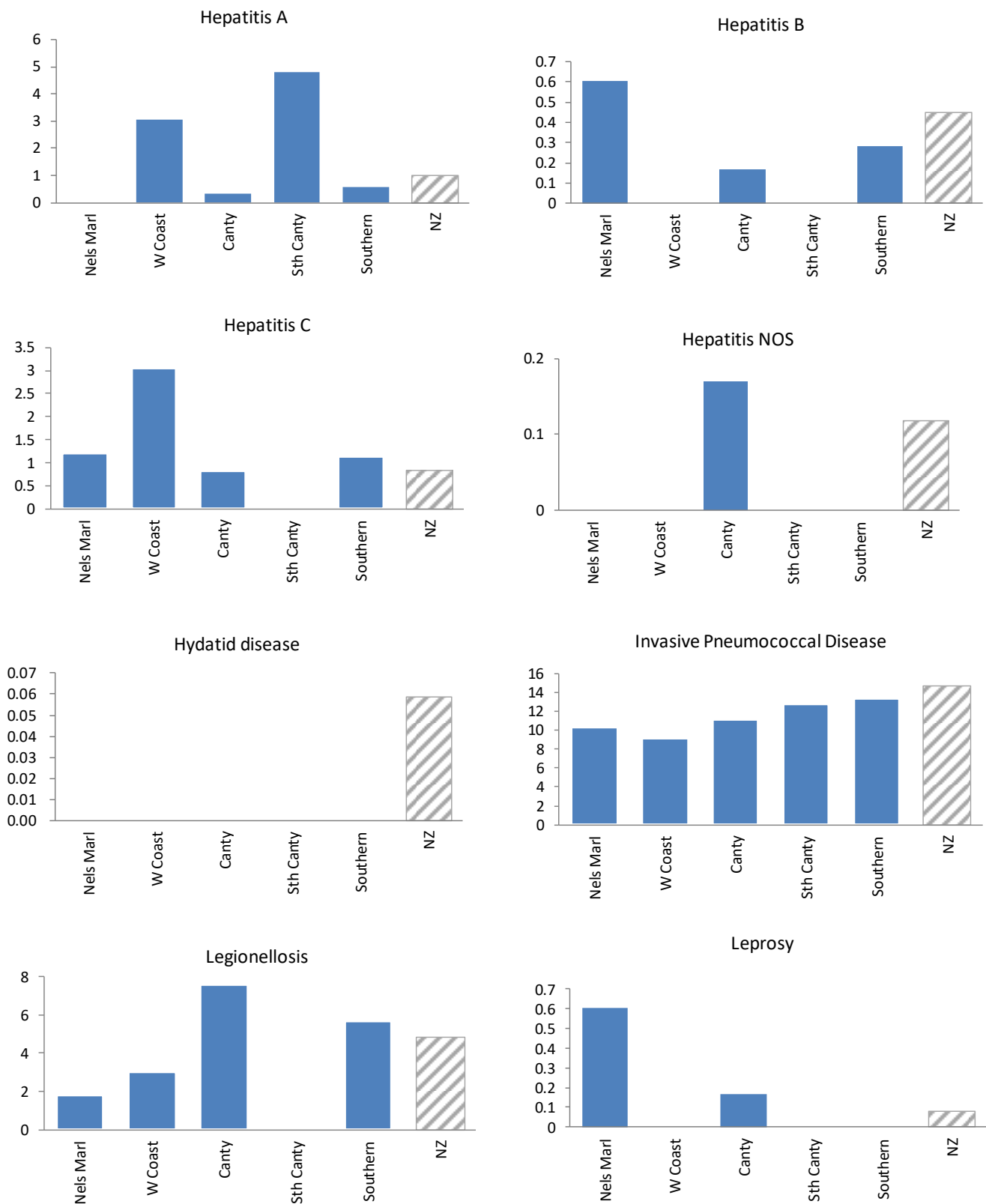
[EpiSurv report N010 extracted 0915 hrs on 8 November 2023]



Te Waipounamu Notifiable Disease Rates by District

Notification Rates (per 100,000 population) By District for the 12 months to October 2023

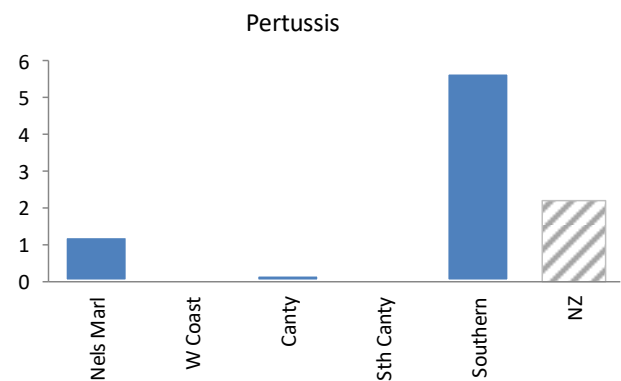
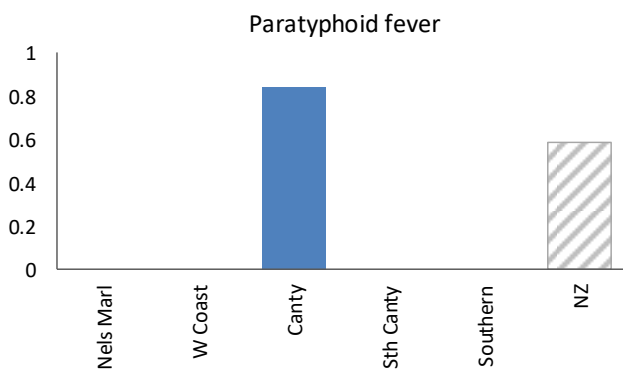
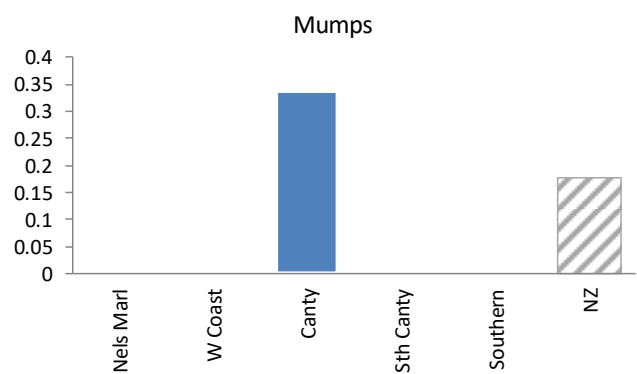
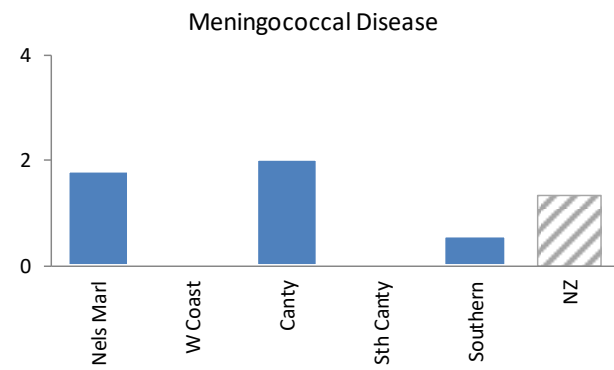
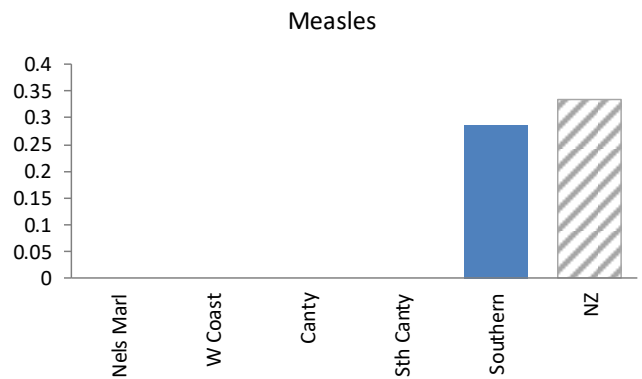
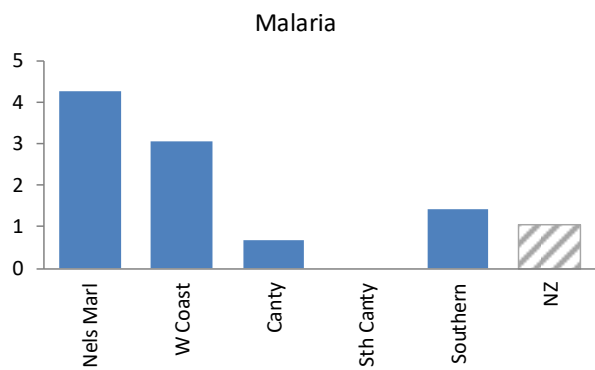
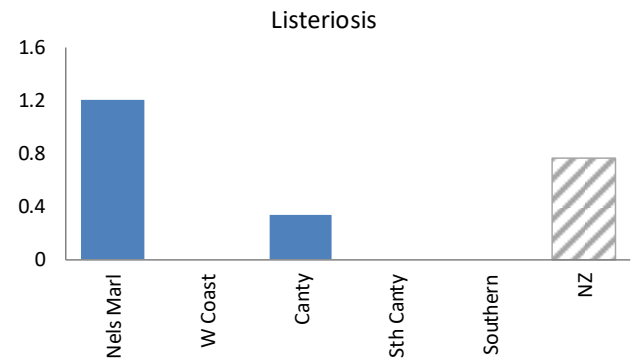
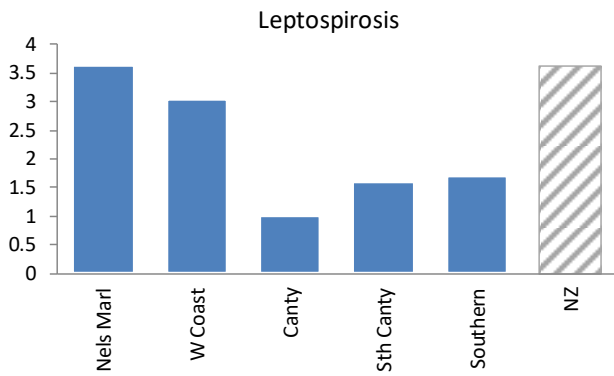
[EpiSurv report N010 extracted 0915 hrs on 8 November 2023]



Te Waipounamu Notifiable Disease Rates by District

Notification Rates (per 100,000 population) By District for the 12 months to October 2023

[EpiSurv report N010 extracted 0915 hrs on 8 November 2023]

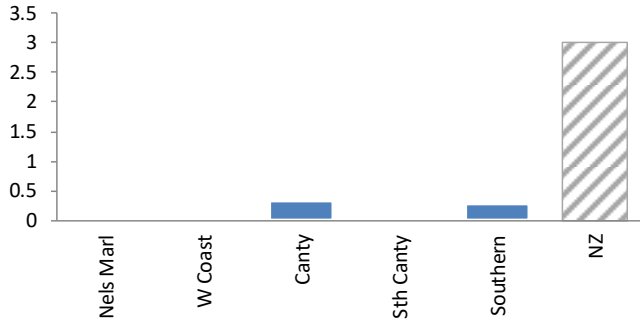


Te Waipounamu Notifiable Disease Rates by District

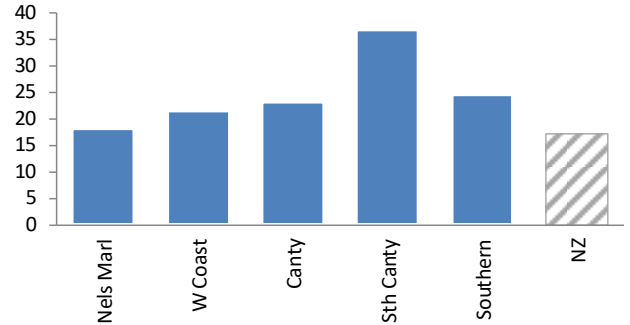
Notification Rates (per 100,000 population) By District for the 12 months to October 2023

[EpiSurv report N010 extracted 0915 hrs on 8 November 2023]

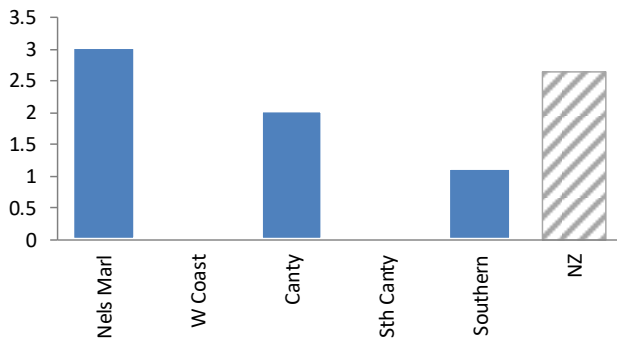
Rheumatic Fever - Initial Attack



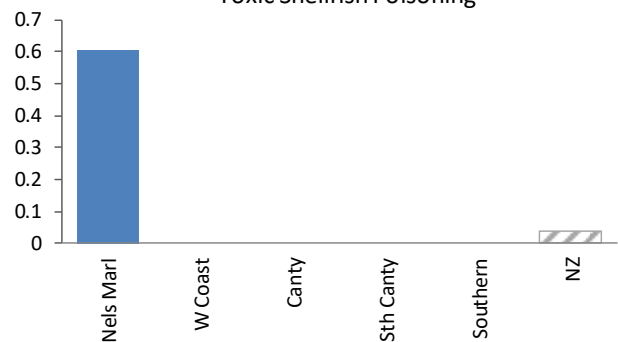
Salmonellosis



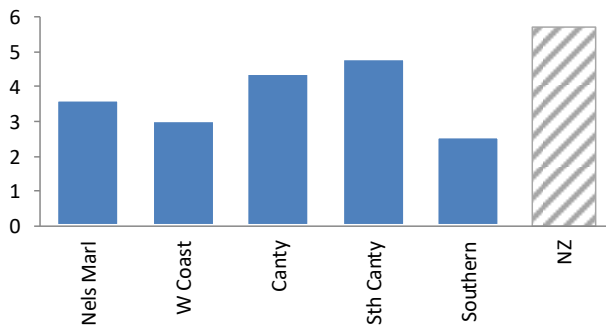
Shigellosis



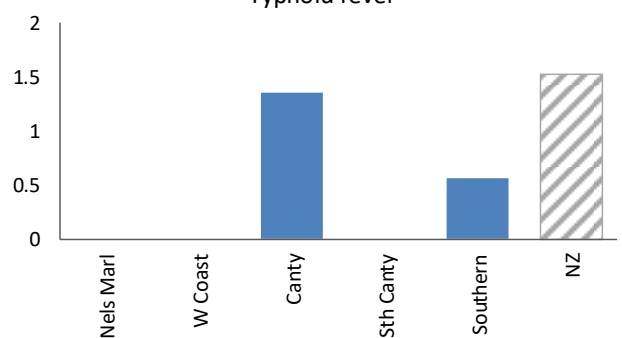
Toxic Shellfish Poisoning



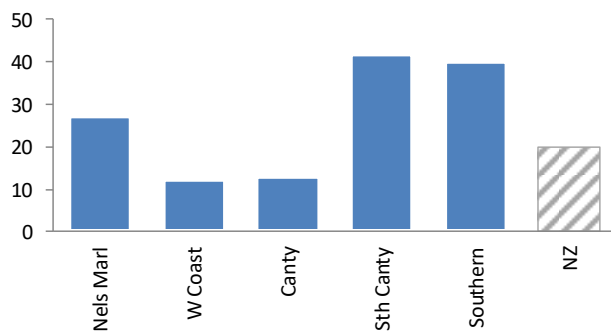
Tuberculosis - new case



Typhoid fever



VTEC



Yersiniosis

