

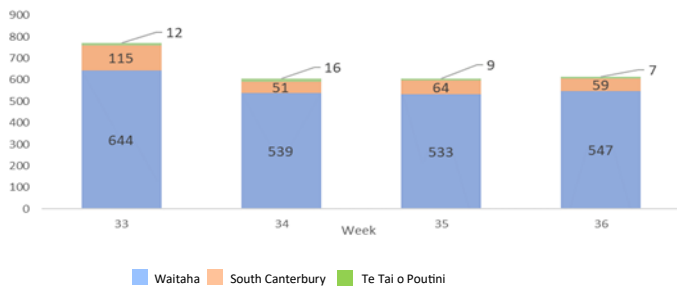
Key points

- Total influenza identifications increased slightly in the last reporting week and remain at a high level.
- Influenza B currently predominates.
- Reported COVID-19 case numbers increased slightly in the last reporting week for Waitaha Canterbury.
- RSV identifications increased slightly in the last reporting week and remain at a low level.

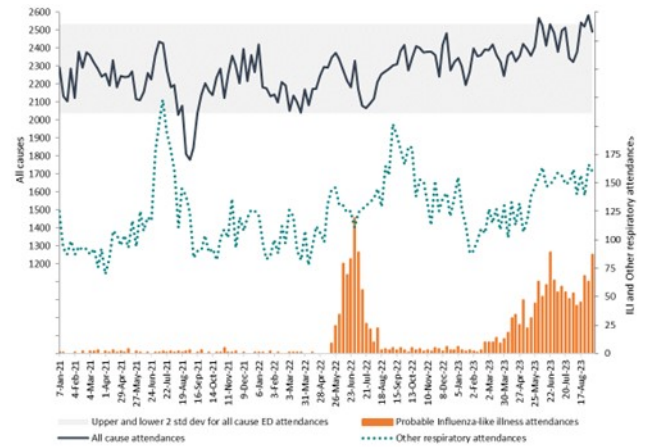
Waitaha Canterbury District positive influenza identifications\*

Influenza type	This week	Last week	2023 total (%)
A (untyped)	48	43	1,258 (63.2%)
B	107	96	734 (36.8%)

New COVID-19 cases, by week and Te Mana Ora district†

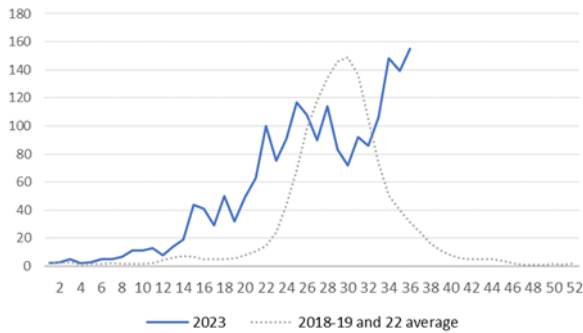


Christchurch Hospital Emergency Department attendance

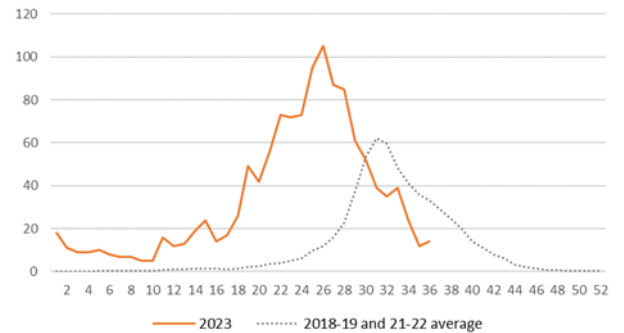


Waitaha Canterbury District positive laboratory influenza and RSV identifications, by week\*

Influenza

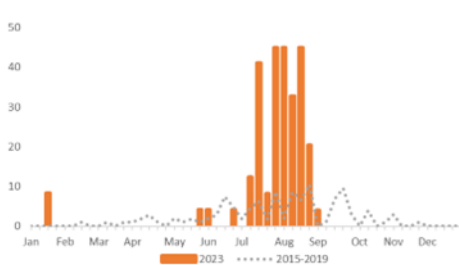


Respiratory Syncytial Virus

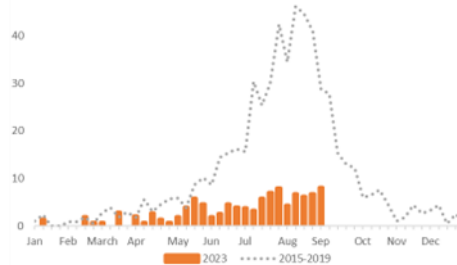


HealthStat influenza-like illness rate (per 100,000 population), by week and Te Mana Ora district

Te Tai o Poutini West Coast



Waitaha Canterbury



South Canterbury



The figures above, presented by ESR, show weekly rates of general practice influenza-like illness consultations per 100,000 people collected by HealthStat sentinel surveillance practices, by Te Mana Ora district (reporting lags possible).

For estimates of ILI rates by Te Mana Ora district, using HealthStat and HealthLine data, see ESR's weekly surveillance updates available at:

[www.esr.cri.nz/our-research/nga-kete/infectious-disease-intelligence/influenza-and-respiratory-surveillance/](http://www.esr.cri.nz/our-research/nga-kete/infectious-disease-intelligence/influenza-and-respiratory-surveillance/)

\*Influenza and RSV identifications for Waitaha Canterbury District are provided by Canterbury Health Laboratories (CHL), and may include data from Ashburton Hospital and Te Tai o Poutini District; note 2020 and 2021 data were not included in historical averages due to no influenza identifications in the community during the reporting period.

†Includes imported and locally acquired self-reported cases.