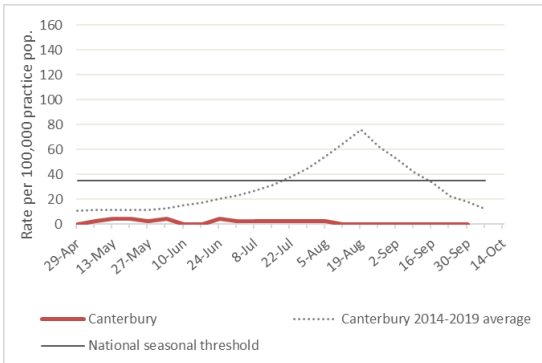


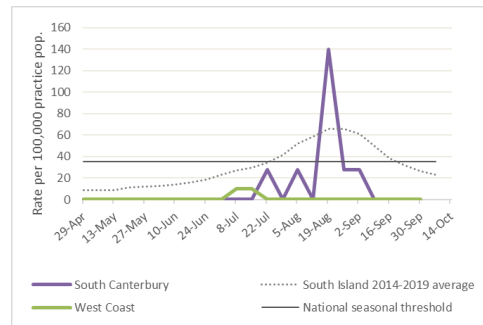
Key points

- RSV laboratory identifications are low and there are no influenza identifications in Canterbury
- Influenza-like illness reporting is low in Canterbury, South Canterbury and West Coast
- Community COVID-19 testing numbers are lower in Canterbury and South Canterbury, and higher on the West Coast, than last week. There are no community cases of COVID-19 in our region
- This is the last Community and Public Health region respiratory report for 2021.

Canterbury DHB influenza-like illness rates (May–Oct) 2021



South Canterbury and West Coast DHB influenza-like illness rates (May–Oct) 2021



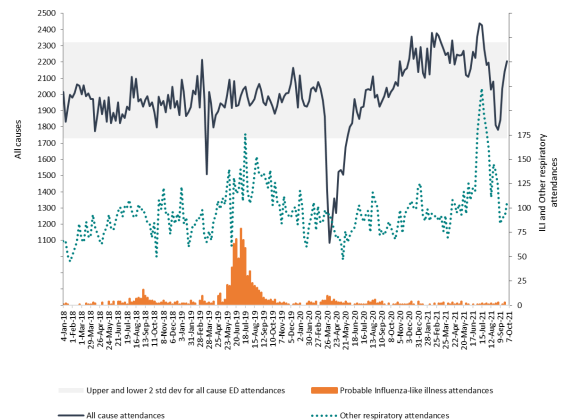
Canterbury DHB positive influenza identifications

Influenza type	This week	Last week	2021 total (%)
A (untyped)	0	0	0 (%)
B	0	0	0 (%)

Community COVID-19 test numbers, by week and DHB

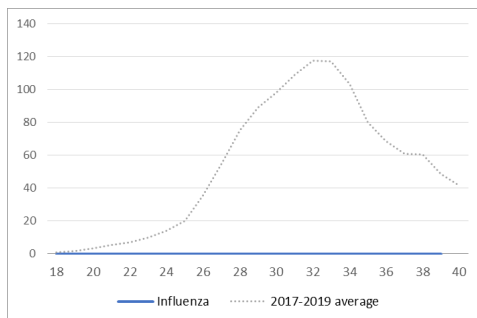
DHB	6-12 Sept	13-19 Sept	20-26 Sept	27 Sept–3 Oct
Canterbury	4660	4633	4857	4701
South Canterbury	315	222	231	161
West Coast	87	76	60	77

Christchurch Hospital Emergency Department attendance

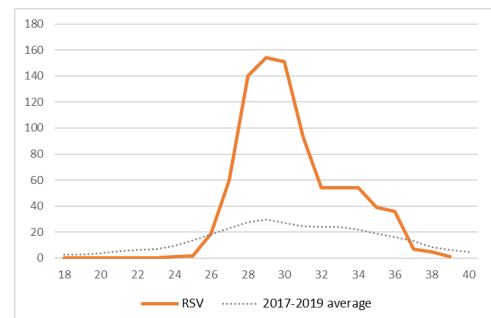


Canterbury DHB positive laboratory influenza and RSV identifications, by week

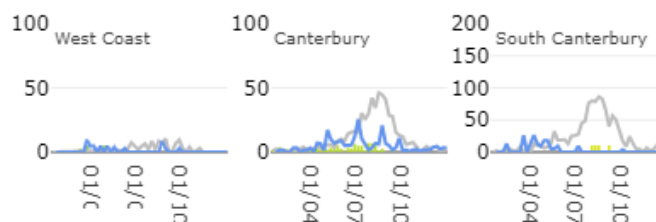
Influenza



Respiratory syncytial virus



HealthStat influenza-like illness rate (per 100,000 population), by week and DHB



2021
2020
Historical rate (2015-2019)

Available at: www.esr.cri.nz/our-services/consultancy/flu-surveillance-and-research/

Notes: Influenza and RSV identifications provided by Canterbury Health Laboratories (CHL), and may include data from West Coast DHB and Ashburton Hospital. Canterbury, South Canterbury and West Coast DHB influenza-like illness rates provided by ESR general practice-based influenza-like illness surveillance. 2020 data were not included in historical averages due to no influenza identifications in the community during the reporting period.