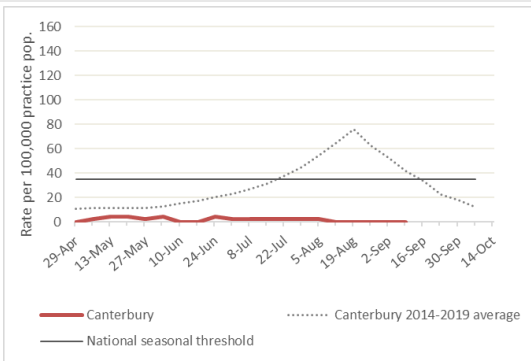


Key points

- RSV laboratory identifications in Canterbury continue to decrease
- Influenza-like illness reporting is low in Canterbury, South Canterbury and West Coast
- There were no influenza identifications at Canterbury Health Laboratories
- The decrease in Emergency Department attendances is likely due to the Alert Level changes of the past month
- There were no community cases of COVID-19

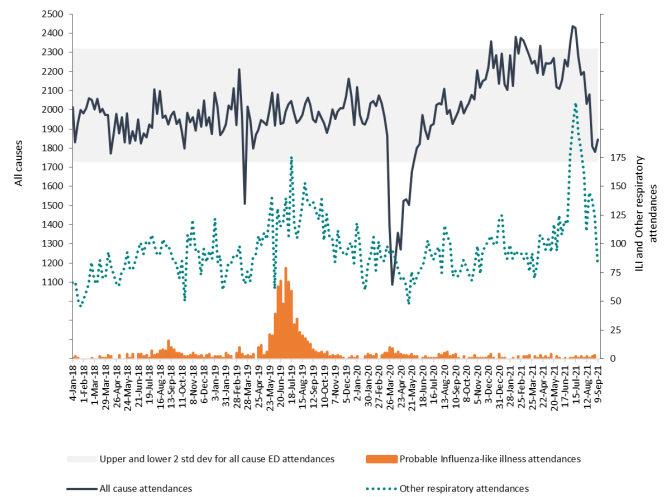
Canterbury DHB influenza-like illness rates (May–Oct) 2021



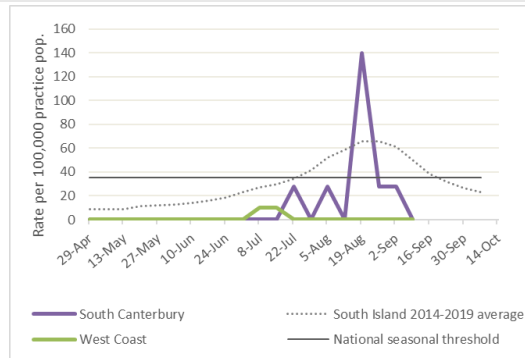
Canterbury DHB positive influenza identifications from Canterbury Health Laboratories

Influenza type	This week	Last week	2021 total (%)
A (untyped)	0	0	0 (%)
B	0	0	0 (%)

Christchurch Hospital Emergency Department attendance (from January 2018)

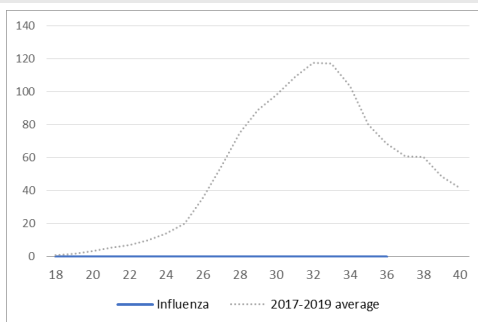


South Canterbury and West Coast DHB influenza-like illness rates (May–Oct) 2021

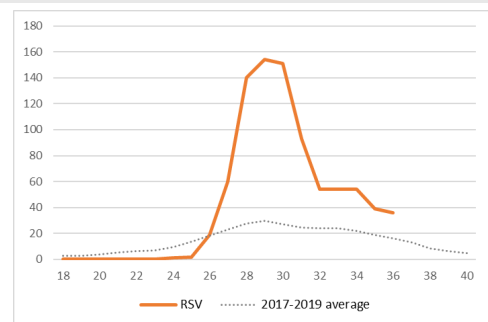


Canterbury DHB positive laboratory influenza and RSV identifications, by week

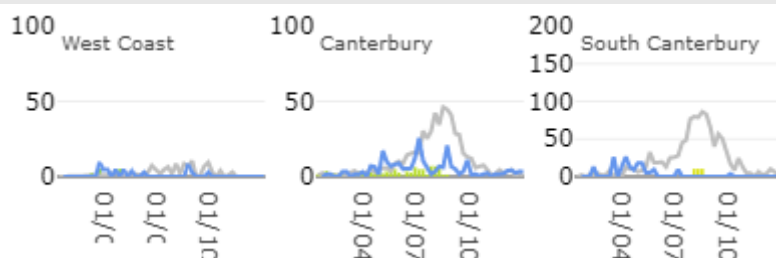
Influenza



Respiratory syncytial virus



HealthStat influenza-like illness rate (per 100,000 population), by week



2021
2020
Historical rate (2015-2019)

Available at: www.esr.cri.nz/our-services/consultancy/flu-surveillance-and-research/

Notes: Influenza and RSV identifications provided by Canterbury Health Laboratories (CHL), and may include data from West Coast DHB and Ashburton Hospital. Canterbury, South Canterbury and West Coast DHB influenza-like illness rates provided by ESR general practice-based influenza-like illness surveillance. 2020 data were not included in historical averages due to no influenza identifications in the community during the reporting period.