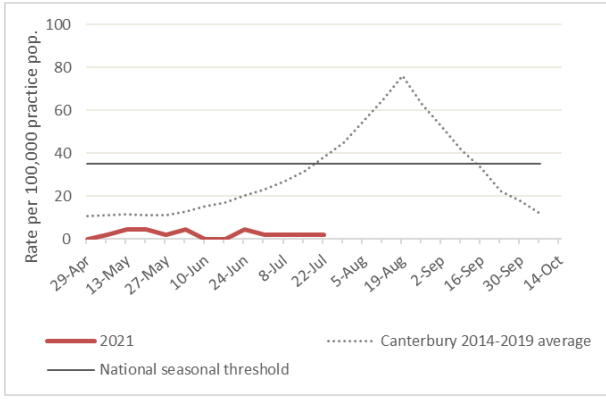


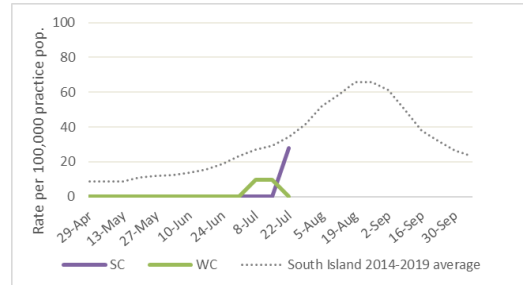
Key points

- RSV activity remains high Canterbury.
- Influenza-like illness reporting remains low, with one notification each in CDHB and SCDHB.
- There have been no influenza positive identifications in the past week at Canterbury Health Laboratories.

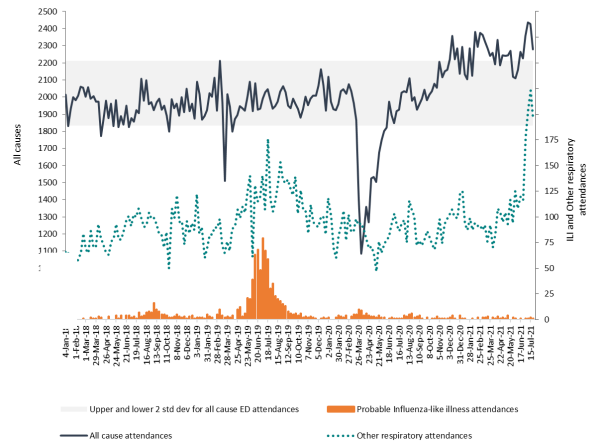
Canterbury DHB influenza-like illness rates (May–Oct) 2021



South Canterbury and West Coast DHB influenza-like illness rates (May–Oct) 2021



Christchurch Hospital Emergency Department attendance (from January 2018)



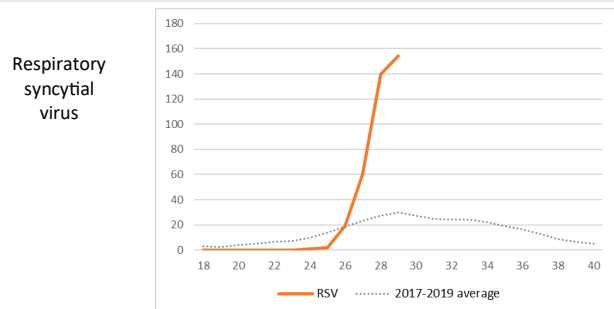
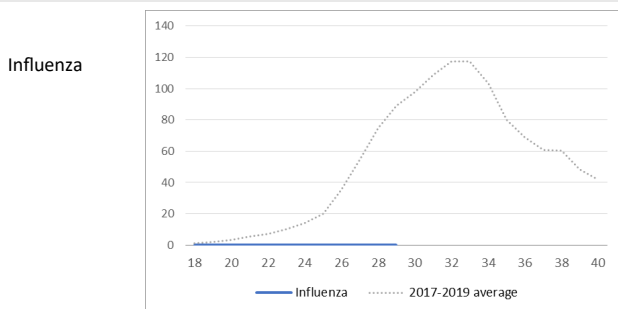
Canterbury DHB positive influenza identifications

Influenza type	This week	Last week	2021 total (%)
A (untyped)	0	0	0 (%)
B	0	0	0 (%)

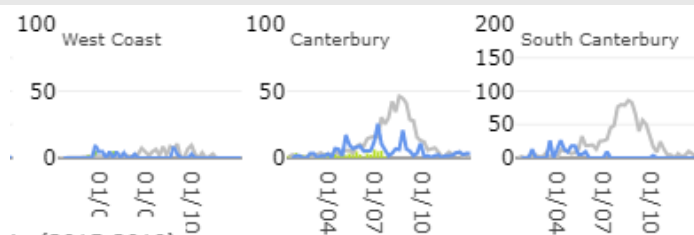
Respiratory outbreaks in Canterbury aged residential care facilities

Total — 2021	26
Currently active — total	5
Currently active and confirmed influenza	0
Newly identified this week	3

Canterbury DHB positive laboratory influenza and RSV identifications, by week



HealthStat influenza-like illness rate (per 100,000 population), by week



2021
2020
Historical rate (2015-2019)

Available at: www.esr.cri.nz/our-services/consultancy/flu-surveillance-and-research/

Notes: Influenza and RSV identifications provided by Canterbury Health Laboratories, and may include data from the West Coast DHB and Ashburton Hospital. Canterbury, South Canterbury and West Coast DHB influenza-like illness rates provided by ESR general practice-based influenza-like illness surveillance. Respiratory outbreaks in aged residential care facilities reported to the CDHB Infection Prevention & Control Service. 2020 data were not included in historical averages due to no influenza identifications in the community during the reporting period.