

Canterbury, South Canterbury and West Coast DHBs

Notifiable Diseases By Territorial Authority

Week 21 ending 22 May 2020

[EpiSurv extract P023 26.5.2020 at 0805 hrs]

	Previous Week		Territorial Authority											
	Previous Week	Total	Buller	Grey	Westland	Kaikoura	Hurunui	Waimakariri	Christchurch	Selwyn	Ashburton	Timaru	Mackenzie	Waimate
Campylobacteriosis	6	5							2	2		1		
COVID-19	1													
Cryptosporidiosis	1													
Gastroenteritis ^C	1	2						2						
Giardiasis	1	3						1		2				
Hepatitis NOS		1						1						
Legionellosis	1	1						1						
Malaria ^C		1						1						
Salmonellosis	4	1					1							
Tuberculosis - new case ^C	2	2						2						
VTEC/STEC infection ^C	1	2						1	1					
Yersiniosis		1						1						

Notifications include confirmed, probable and suspect cases as at the above indicated time when data are extracted from EpiSurv. COVID-19 notifications are not being reported at the level of territorial authority. Zika notifications are only being reported nationally.

^{C,S,W} The trend of the incidence of this disease in either Canterbury (c), South Canterbury (s) or West Coast (w) has been graphed (see following pages) because it either has been flagged by the Early Aberration Reporting System (EARS), or is a disease of interest.

Outbreak reports in the two weeks ending 22 May 2020

Outbreak Number	Report Type	Condition
OB-20-108863-CH	Finalised	Acute respiratory infection
OB-20-108864-CH	Interim	Gastroenteritis / foodborne intox.

Key to the symbols for the graphs of incidence trends

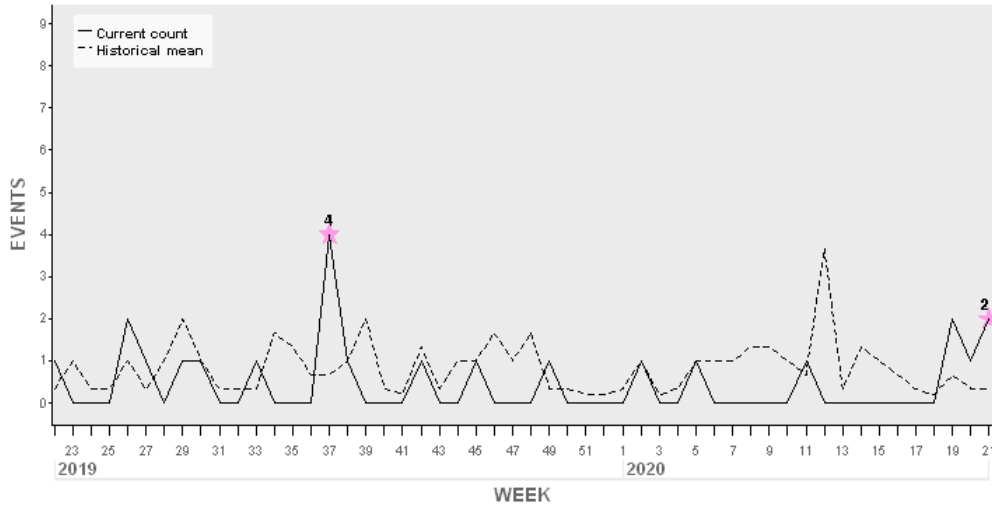
ABERRATION DETECTION FLAGS

★ CUSUM	◆ CUSUM + HL
■ Historical Limits	○ Manual Flag

Canterbury

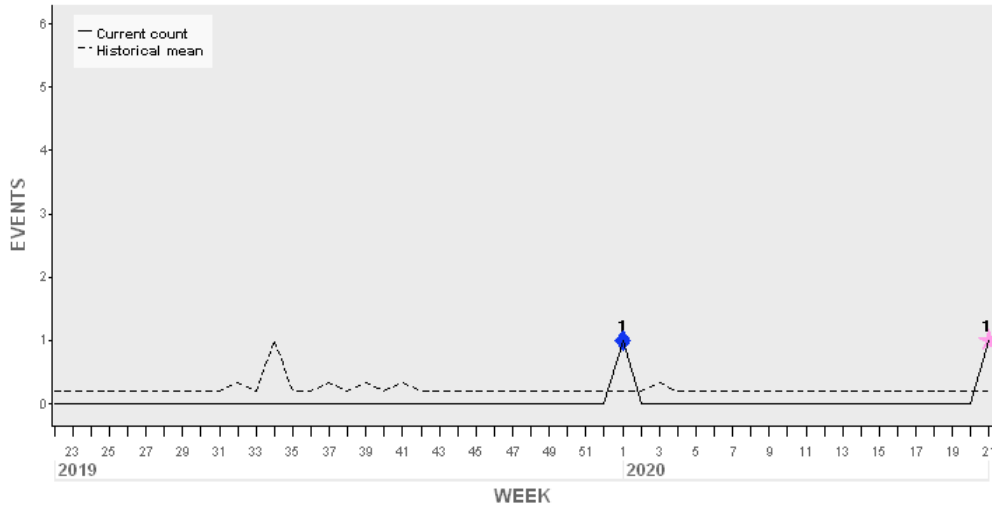
Gastroenteritis

ESR: Canterbury DHB Ending Week 21



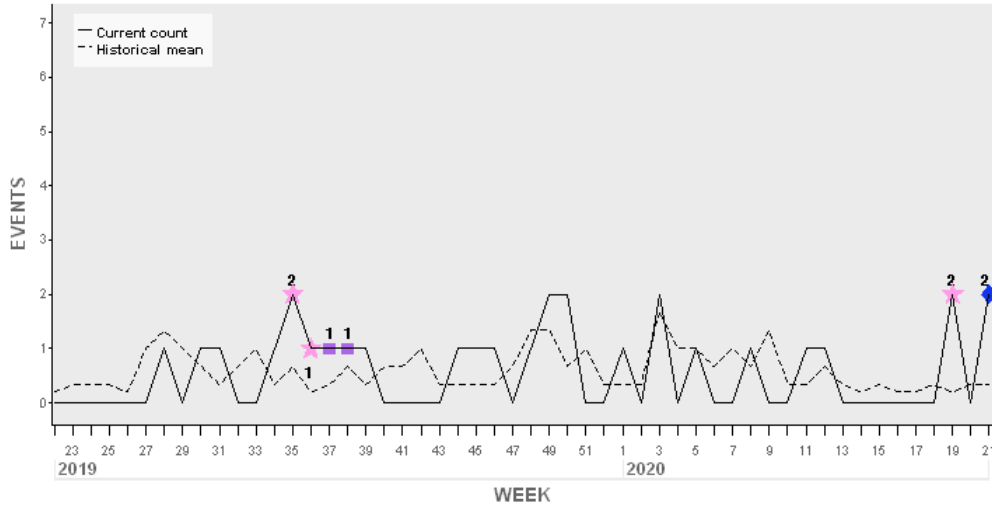
Malaria

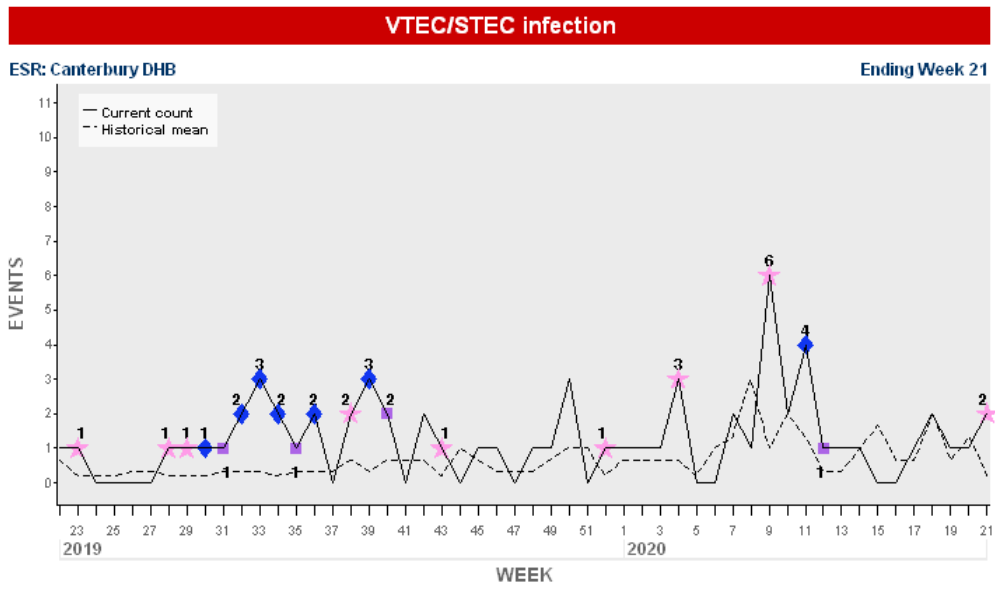
ESR: Canterbury DHB Ending Week 21



Tuberculosis disease

ESR: Canterbury DHB Ending Week 21





South Canterbury

There are no trends to report this week

West Coast

There are no trends to report this week