

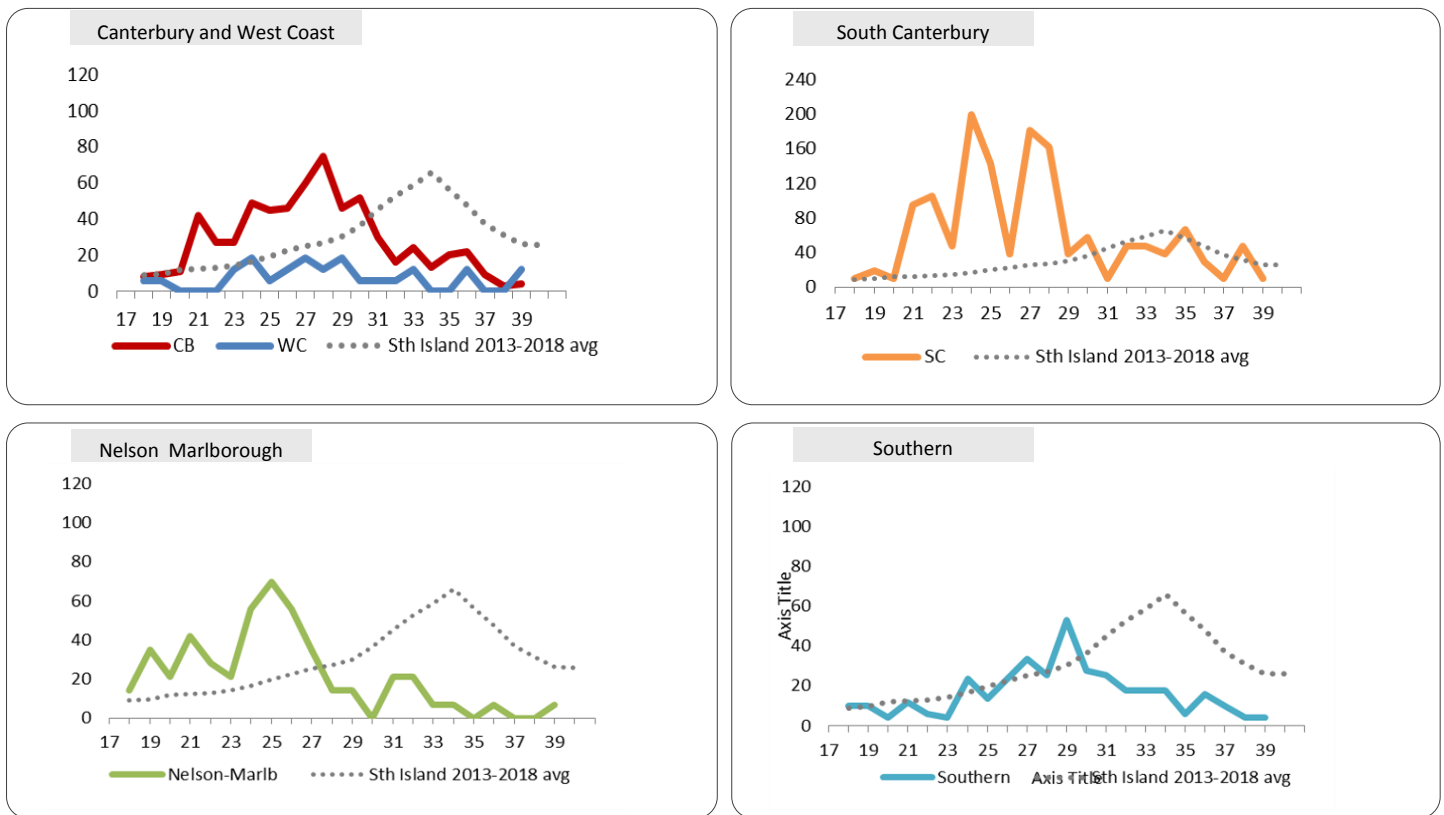
Key points

- Community influenza-like illness rates are now low in all South Island DHBs
- Canterbury influenza identifications are also low
- This is the final South Island influenza and respiratory pathogens report for the 2019 season
- Feedback on our reports and any suggestions for 2020 are welcome. Please contact daniel.williams@cdhb.health.nz

Influenza viruses and Respiratory Syncytial Virus (RSV) in Canterbury

Influenza type	This week	Last week	RSV	This week	Last week
A(untyped)	6	4		3	11
B	4	5			

Community influenza-like illness rates (per 100,000 pop.) by DHB



Notified respiratory diseases by week

