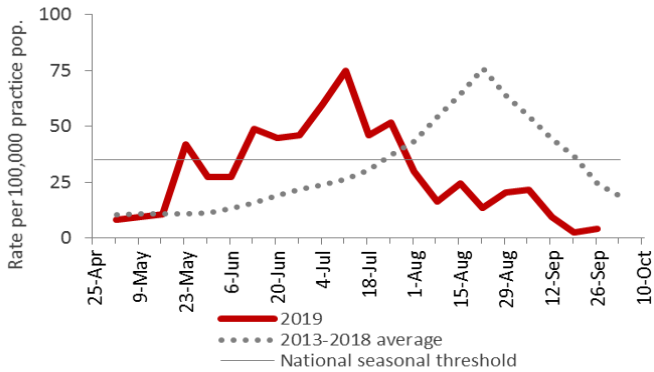


Key points

- Canterbury influenza-like illness rates and influenza identifications are now low
- This is the final Canterbury influenza and respiratory pathogens report for the 2019 season
- Feedback on our reports and any suggestions for 2020 are welcome. Please contact daniel.williams@cdhb.health.nz

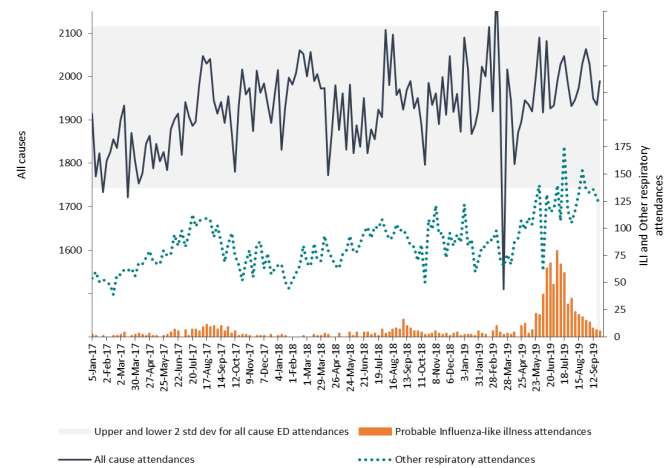
Canterbury influenza-like illness rates (May–Oct) 2019



Positive influenza identifications

Influenza type	This week	Last week
A(untyped)	6	4
B	4	5

Christchurch Hospital Emergency Department attendances (from January 2017)

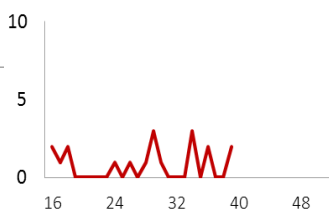


Respiratory Outbreaks in aged residential care facilities reported to/identified by CDHB Infection Prevention & Control Service, for week ending Friday 27 September 2019

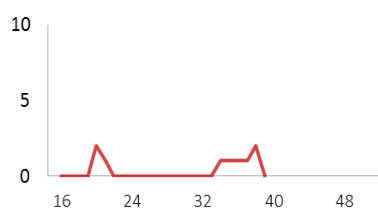
Total 2019	37
Currently active—total	1
Currently active and confirmed influenza	0
Newly identified this week	1

Notifications and laboratory identifications (for influenza and RSV) by week

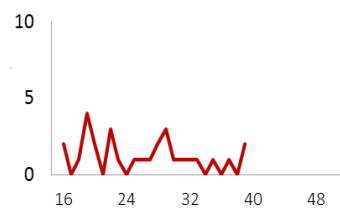
Invasive Pneumococcal Dis



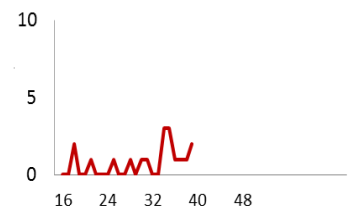
Legionellosis



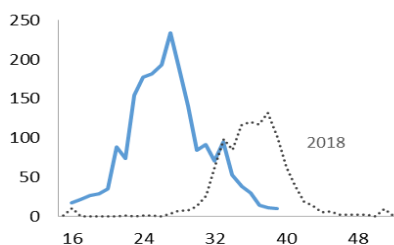
Pertussis



Tuberculosis (new case)



Influenza



Respiratory Syncytial Virus

