

Canterbury, South Canterbury and West Coast DHBs

Notifiable Diseases By Territorial Authority

Week 32 ending 9 August 2019

[EpiSurv extract P023 13.08.2019 at 0745 hrs]

	<i>Previous Week</i>	Total	Buller	Grey	Westland	Kaikoura	Hurunui	Waimakariri	Christchurch	Selwyn	Ashburton	Timaru	Mackenzie	Waimate
Campylobacteriosis	16	17						1	10	1	3	1		1
Cryptosporidiosis ^C	5	4							4					
Dengue fever	3													
Giardiasis ^C		6					1	2	2	1				
Invasive pneumococcal dis.		1		1										
Pertussis	1	1							1					
Rheumatic fever	1													
Salmonellosis	4	3							3					
Shigellosis ^C		1							1					
Tuberculosis - new case	1													
VTEC/STEC infection ^C	2	2					1			1				
Yersiniosis ^S	3	4						1	2			1		

Notifications include confirmed, probable and suspect cases as at the above indicated time when data are extracted from EpiSurv.
Zika notifications are only being reported nationally.

^{C,S,W} The trend of the incidence of this disease in either Canterbury (c), South Canterbury (s) or West Coast (w) has been graphed (see following pages) because it either has been flagged by the Early Aberration Reporting System (EARS), or is a disease of interest.

Outbreak reports in the two weeks ending 9 August 2019

Outbreak Number	Report Type	Condition
OB-19-108362-GM	Interim	Influenza b

Key to the symbols for the graphs of incidence trends

ABERRATION DETECTION FLAGS

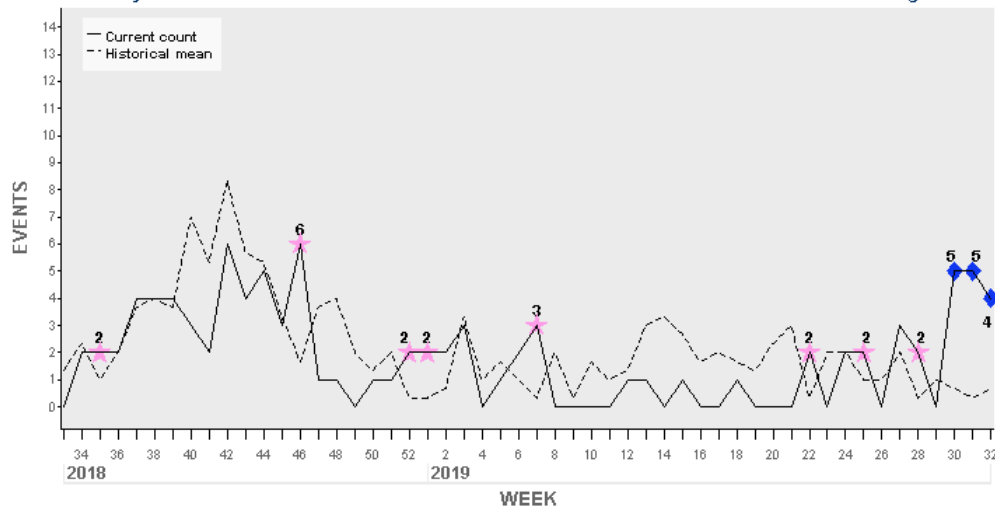
★ CUSUM	◆ CUSUM + HL
■ Historical Limits	○ Manual Flag

Canterbury

Cryptosporidiosis

ESR: Canterbury DHB

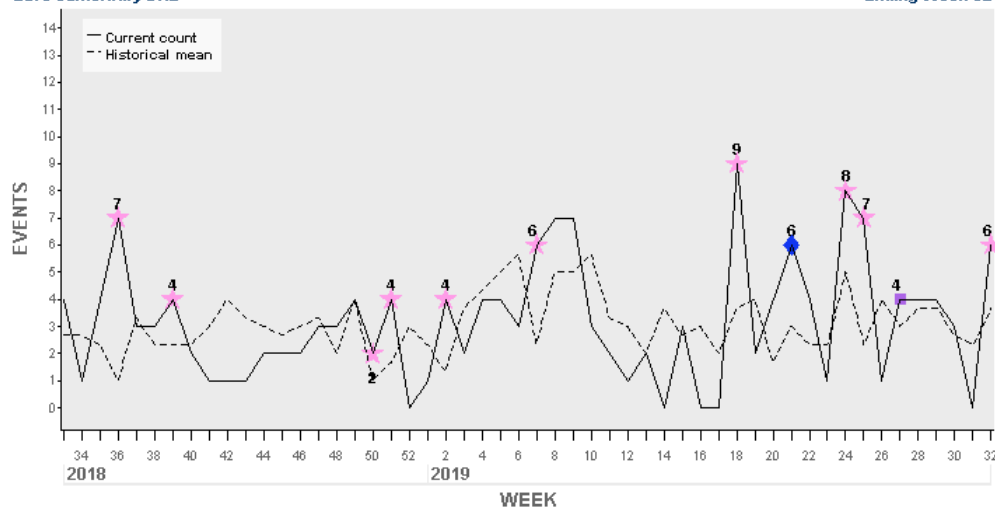
Ending Week 32



Giardiasis

ESR: Canterbury DHB

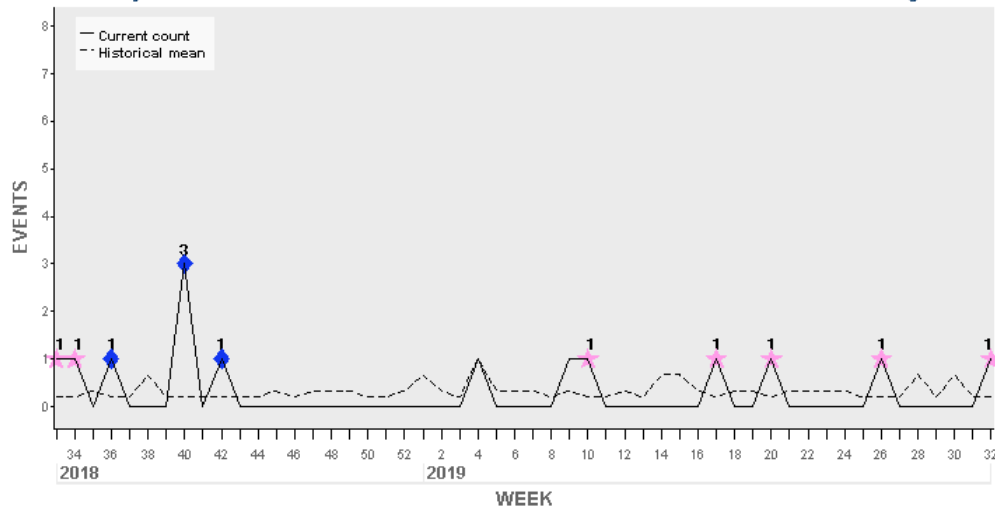
Ending Week 32

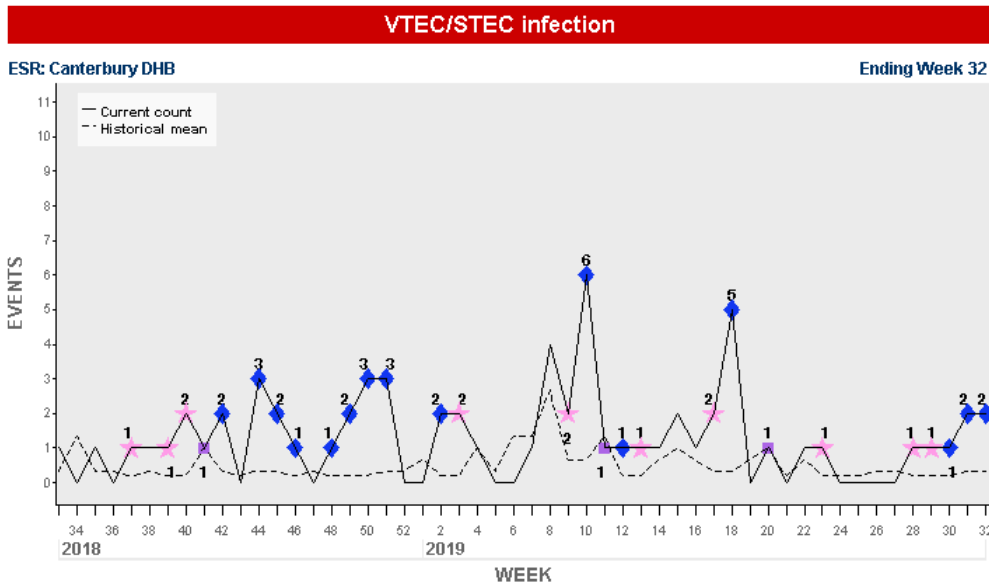


Shigellosis

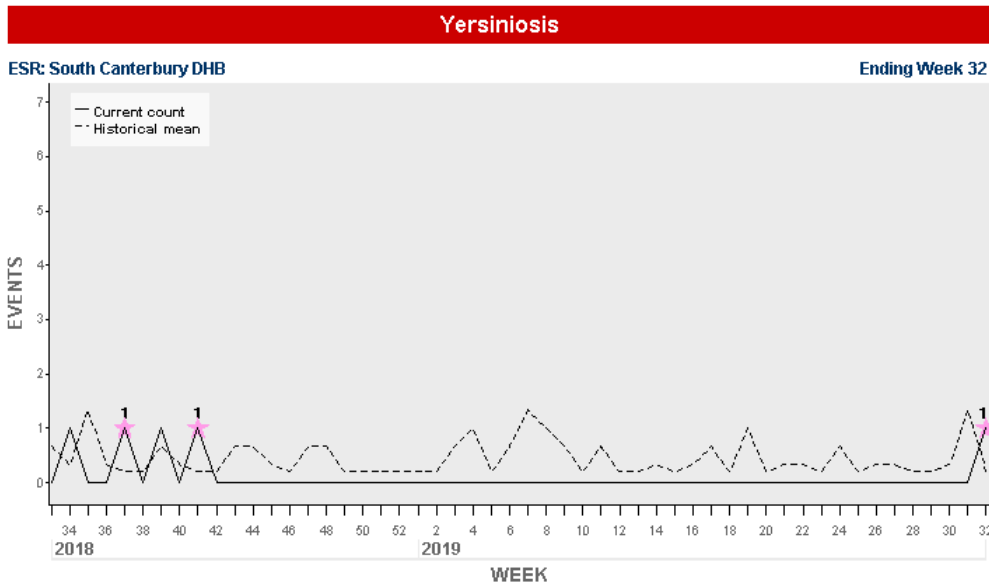
ESR: Canterbury DHB

Ending Week 32





South Canterbury



West Coast

There are no trends to report this week