

## Canterbury, South Canterbury and West Coast DHBs

Notifiable Diseases By Territorial Authority

**Week 31 ending 2 August 2019**

[EpiSurv extract P023 06.08.2019 at 0745 hrs]

	Previous Week													
		Total	Buller	Grey	Westland	Kaikoura	Hurunui	Waimakariri	Christchurch	Selwyn	Ashburton	Timaru	Mackenzie	Waimate
Campylobacteriosis <sup>S</sup>	9	16	2				2		7	2	1	2		
Cryptosporidiosis <sup>C</sup>	5	5							5					
Dengue fever <sup>C</sup>	2	3							2	1				
Gastroenteritis	1													
Giardiasis	3													
Leptospirosis	1													
Measles <sup>C</sup>	1	1							1					
Meningococcal disease	1													
Mumps	1													
Pertussis	1	2	1							1				
Rheumatic fever <sup>C</sup>		1							1					
Salmonellosis <sup>S</sup>	4	4							2		1			1
Tuberculosis - new case	1	1							1					
Typhoid fever	1													
VTEC/STEC infection <sup>C</sup>	1	2						1		1				
Yersiniosis <sup>C</sup>	2	3					1			2				

Notifications include confirmed, probable and suspect cases as at the above indicated time when data are extracted from EpiSurv. Zika notifications are only being reported nationally.

<sup>C,S,W</sup> The trend of the incidence of this disease in either Canterbury (c), South Canterbury (s) or West Coast (w) has been graphed (see following pages) because it either has been flagged by the Early Aberration Reporting System (EARS), or is a disease of interest.

### Outbreak reports in the two weeks ending 2 August 2019

Outbreak Number	Report Type	Condition
OB-19-108354-CH	Interim	Unknown
OB-19-108362-GM	Interim	Unknown
OB-19-108366-CH	Interim	Gastroenteritis - unknown cause
OB-19-108367-CH	Interim	Measles

### Key to the symbols for the graphs of incidence trends

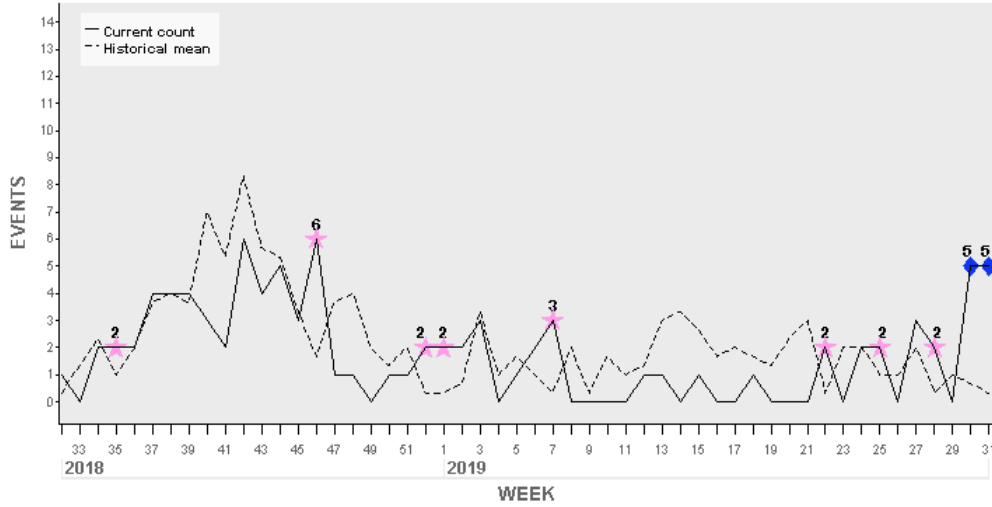
#### ABERRATION DETECTION FLAGS

★ CUSUM	◆ CUSUM + HL
■ Historical Limits	○ Manual Flag

Canterbury

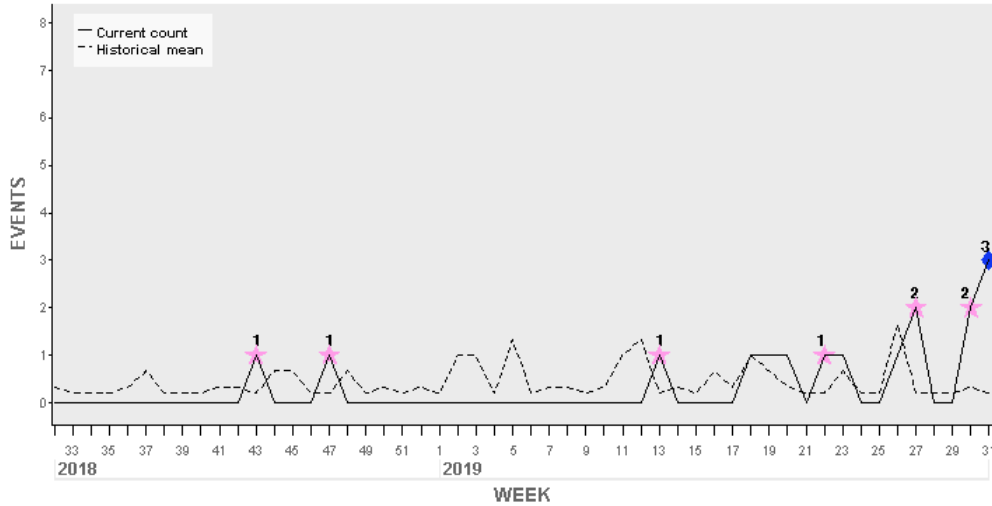
**Cryptosporidiosis**

ESR: Canterbury DHB Ending Week 31



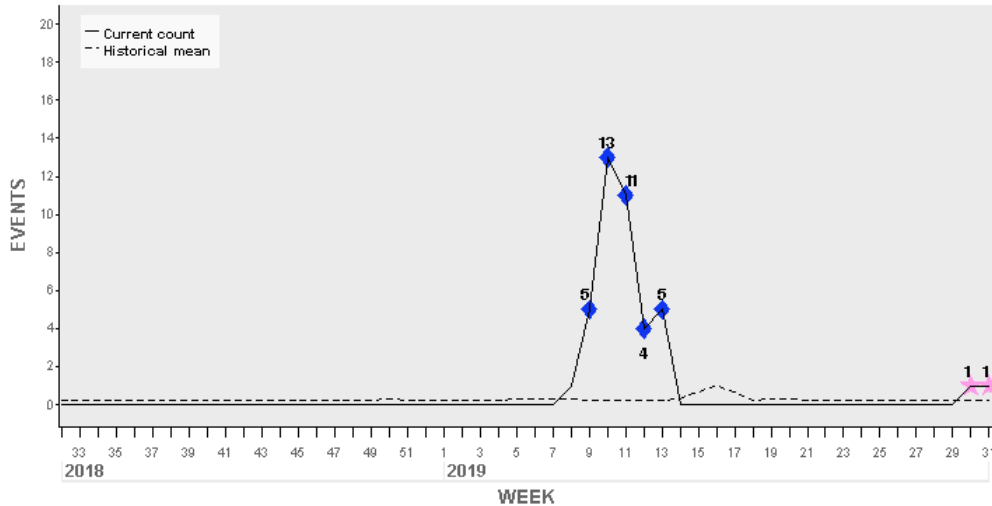
**Dengue fever**

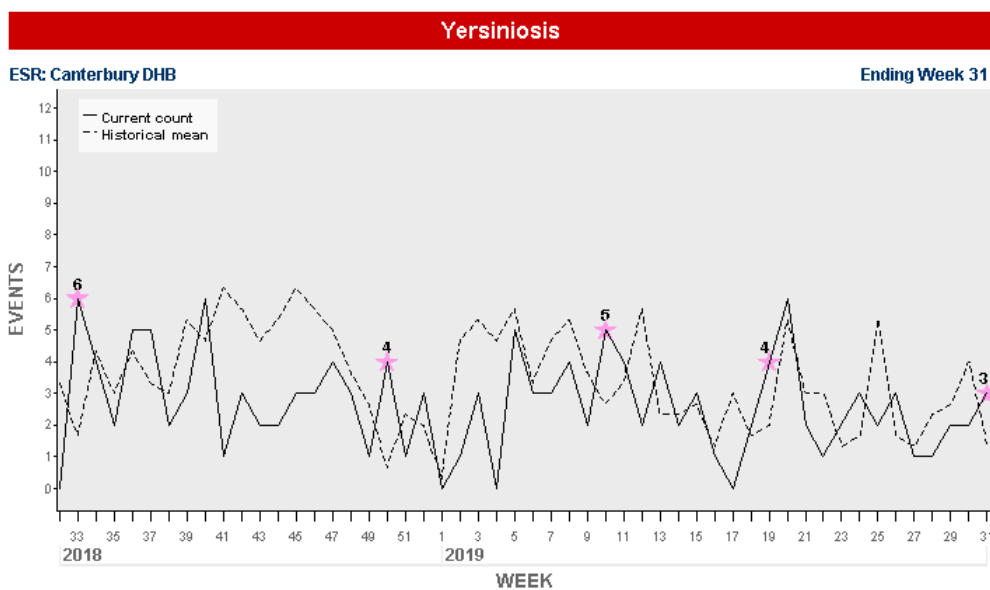
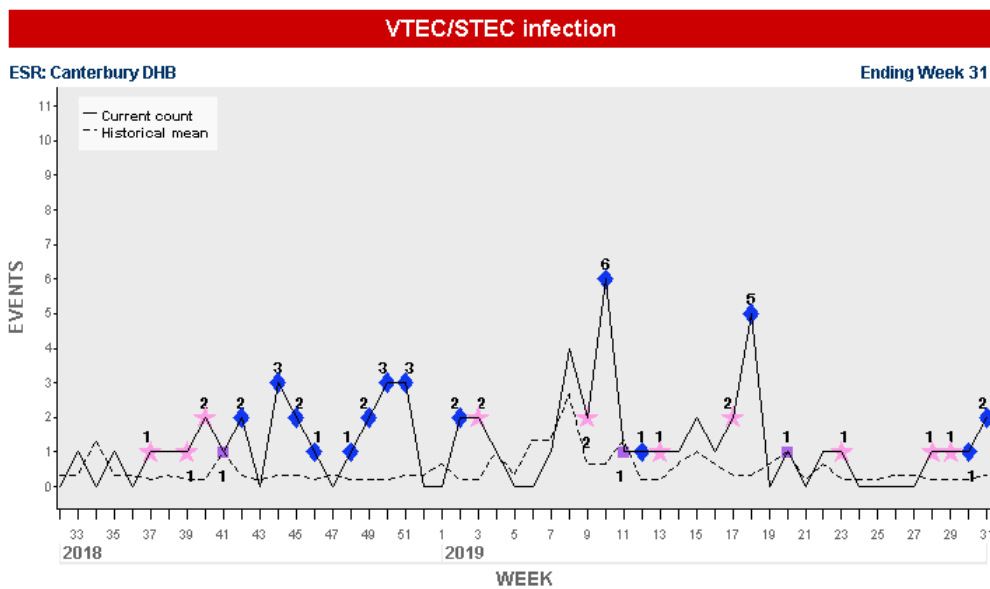
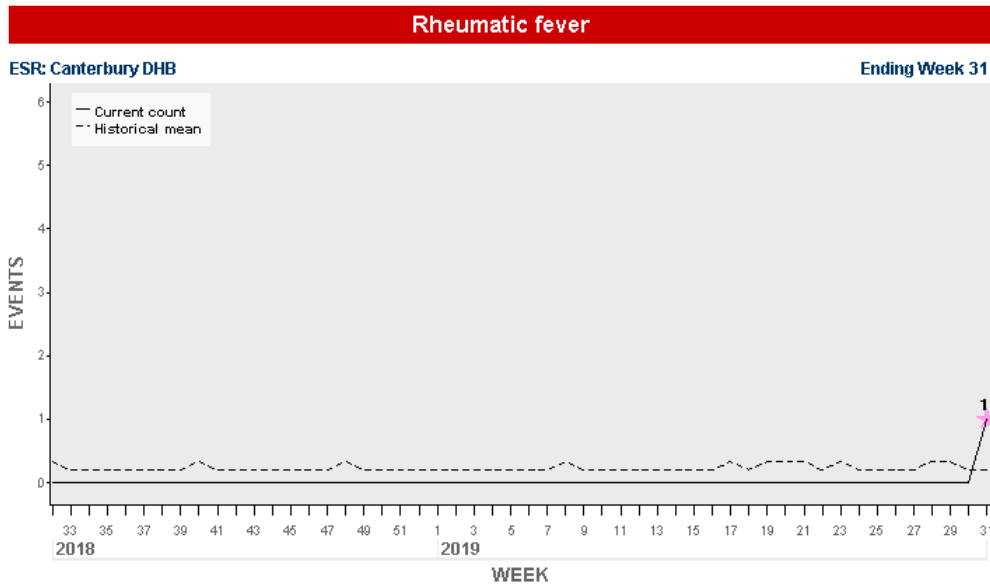
ESR: Canterbury DHB Ending Week 31



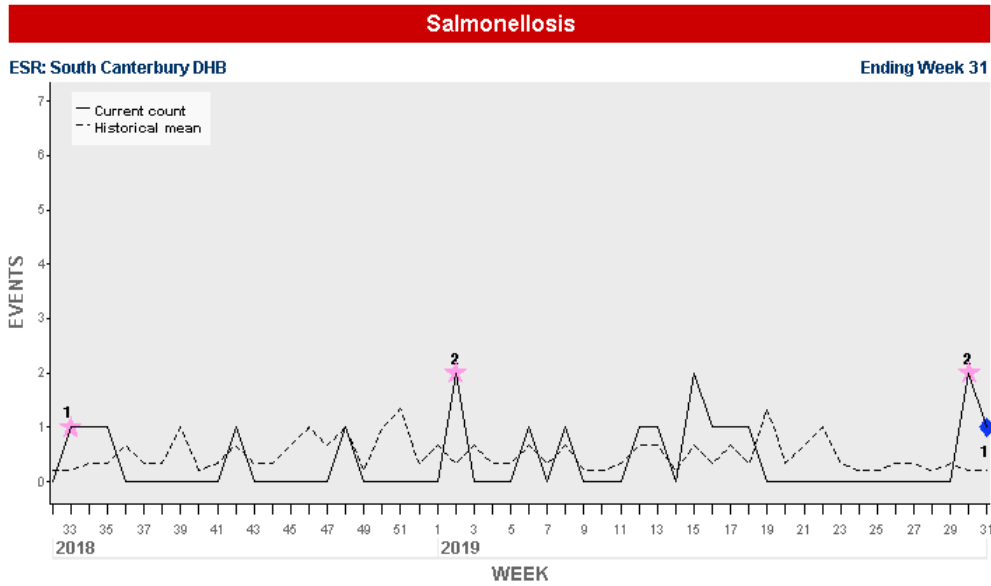
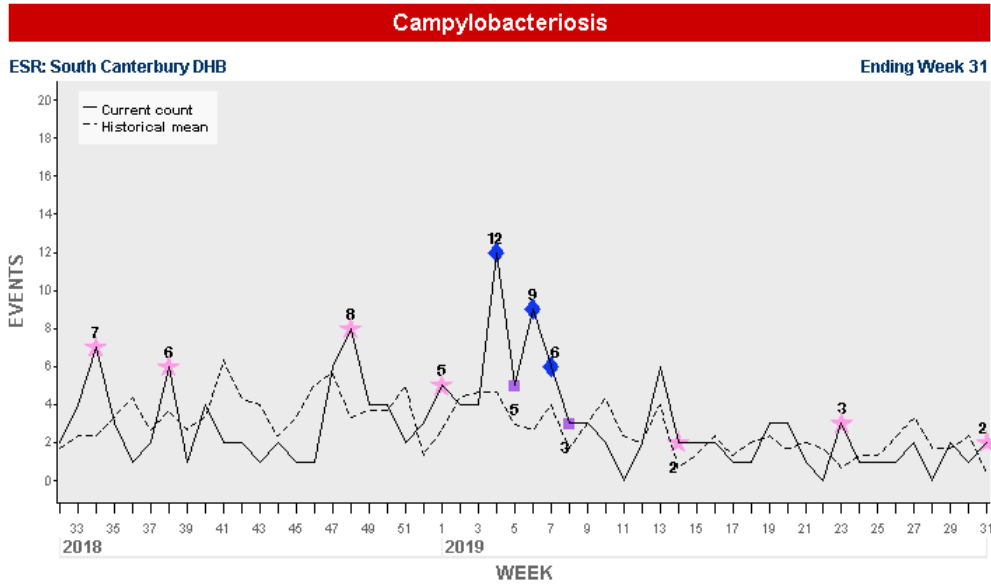
**Measles**

ESR: Canterbury DHB Ending Week 31





**South Canterbury**



**West Coast**

There are no trends to report this week