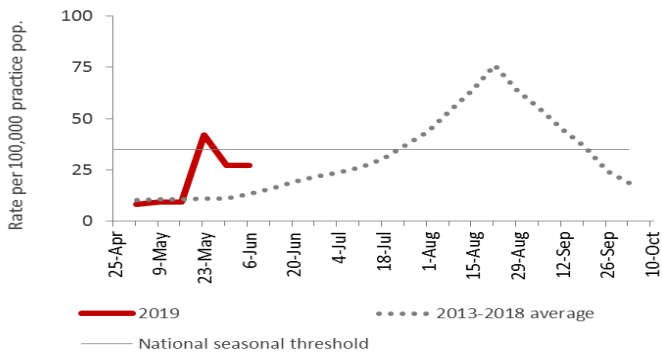


Key points

- Canterbury community influenza-like illness rates and influenza hospital admissions are above average for this time of year
- As of 28 May Canterbury Health Laboratory has introduced a rapid FluA/FluB/RSV test. As a result, some respiratory pathogens can no longer be reported

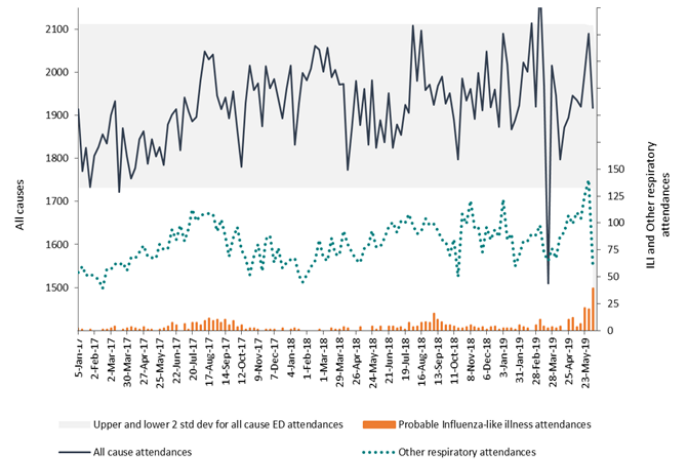
Canterbury influenza-like illness rates (May–Oct) 2019



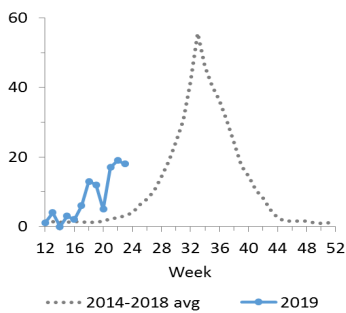
Positive influenza identifications

Influenza type	This week	Last week
A(untyped)	119	60
B	27	14

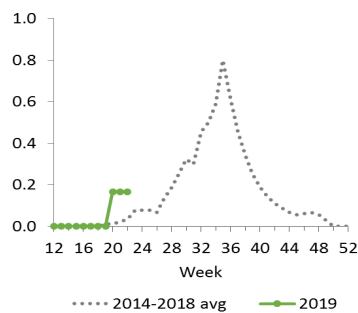
Christchurch Hospital Emergency Department attendances (from January 2017)



Hospital influenza admissions (weekly)

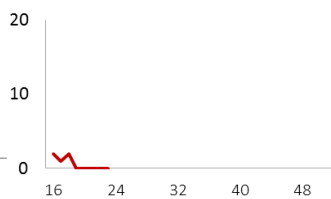


ICU/CICU influenza admissions (6-week moving average)

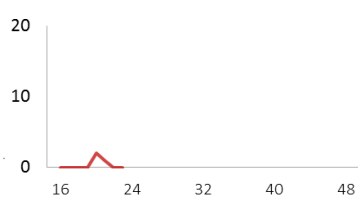


Notifications and laboratory identifications (for influenza and RSV) by week

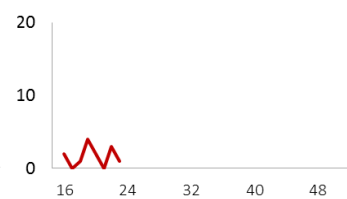
Invasive Pneumococcal Dis



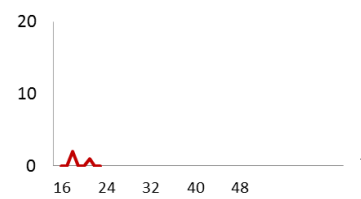
Legionellosis



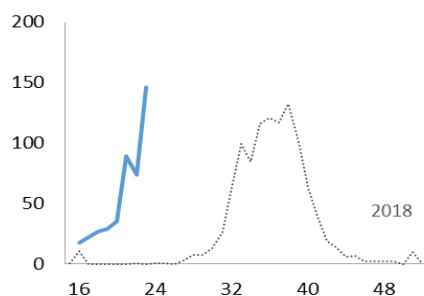
Pertussis



Tuberculosis (new case)



Influenza



Respiratory Syncytial Virus

