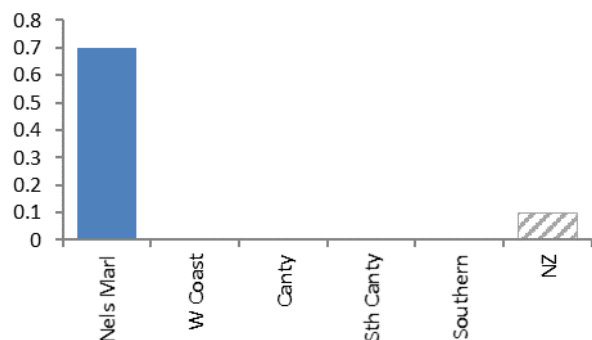


## South Island Notifiable Disease Rates By DHB\*

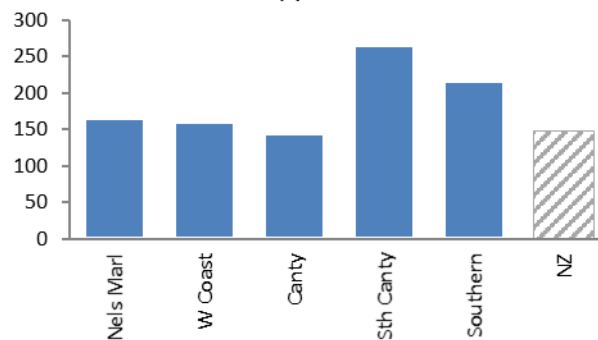
Notification Rates (per 100,000 population) By District Health Board for the 12 months to January 2019

\* Zika notifications are only being reported nationally

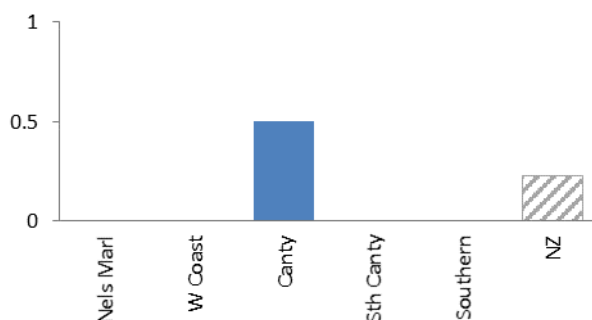
Brucellosis



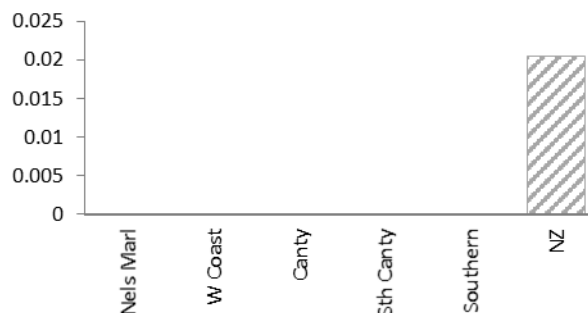
Campylobacteriosis



Chikungunya fever



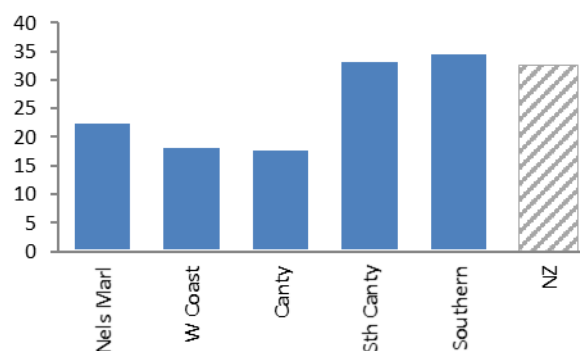
Cholera



Cronobacter species



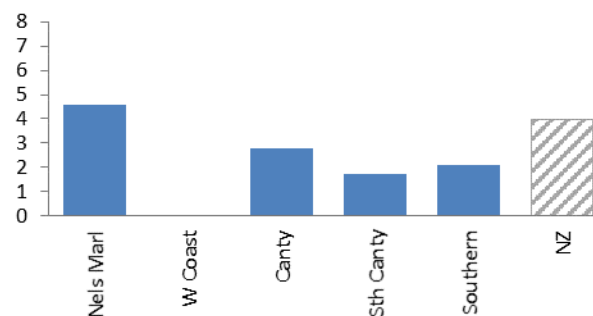
Cryptosporidiosis



Cysticercosis



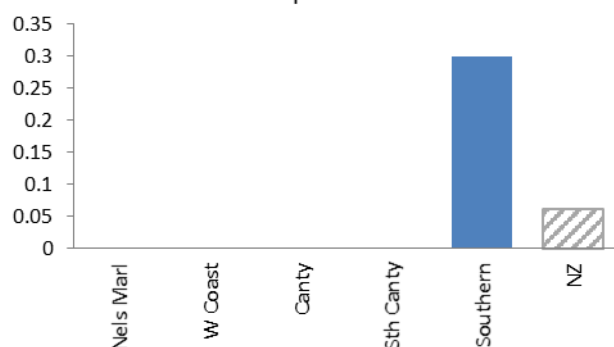
Dengue fever



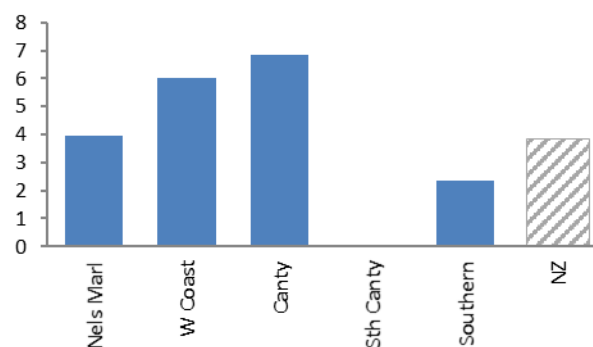
## South Island Notifiable Disease Rates By DHB\*

Notification Rates (per 100,000 population) By District Health Board for the 12 months to January 2019

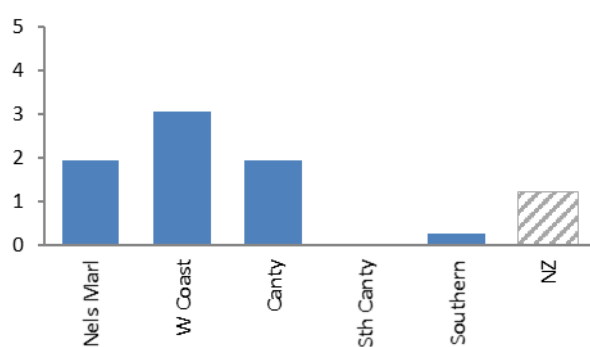
Diphtheria



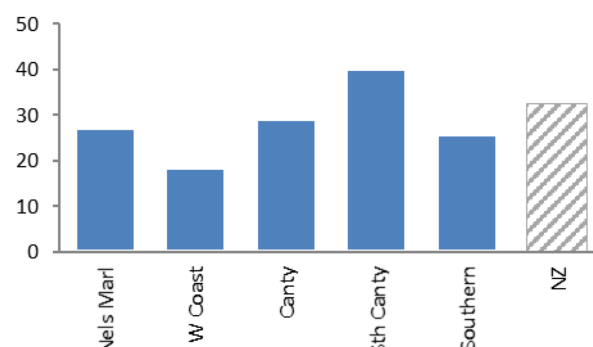
Gastroenteritis - Unknown Cause



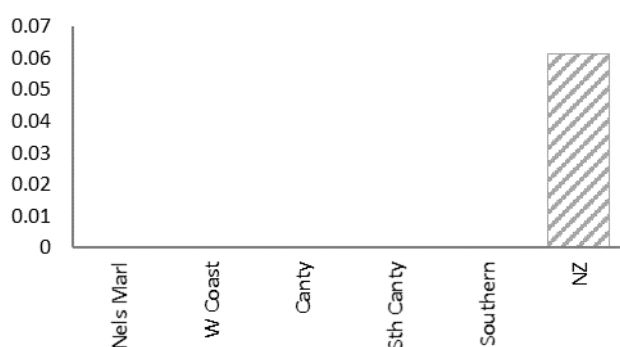
Gastroenteritis - Foodborne



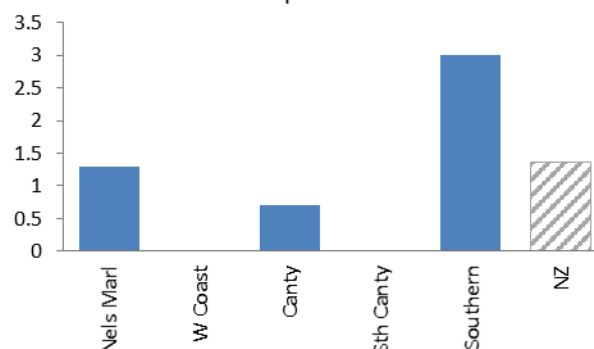
Giardiasis



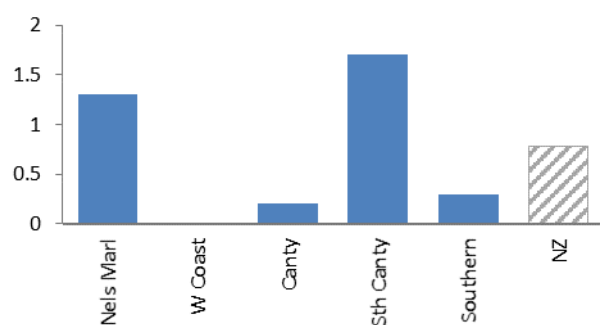
Haemophilus influenzae type b



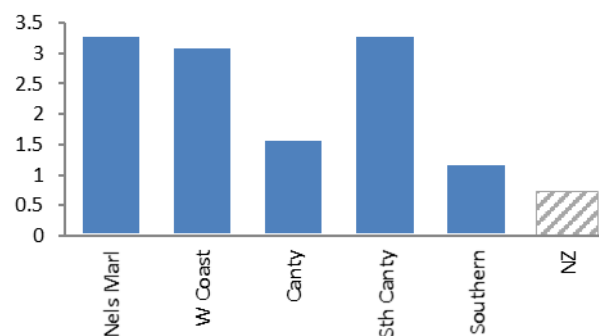
Hepatitis A



Hepatitis B



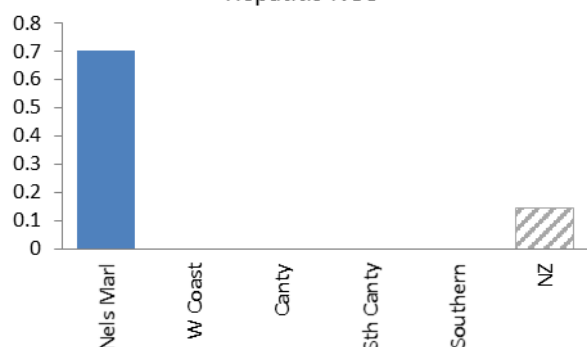
Hepatitis C



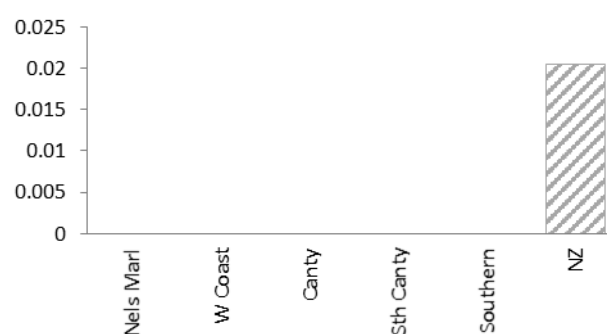
## South Island Notifiable Disease Rates By DHB\*

Notification Rates (per 100,000 population) By District Health Board for the 12 months to January 2019

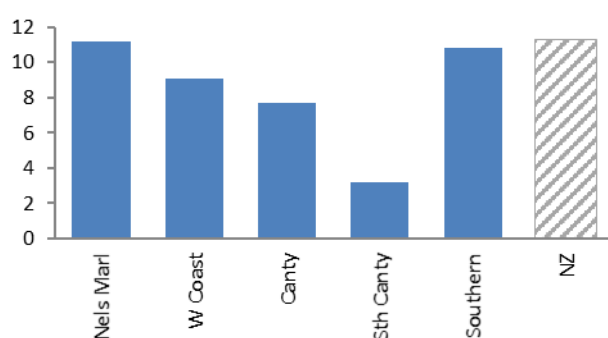
Hepatitis NOS



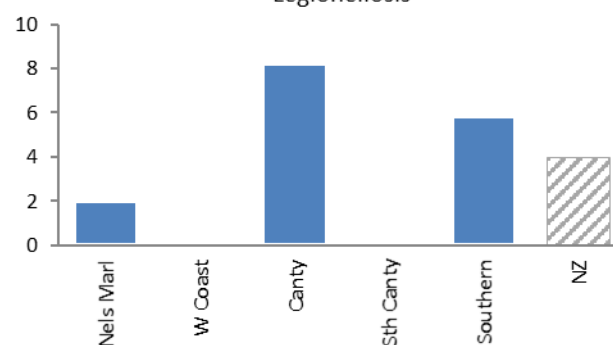
Hydatid disease



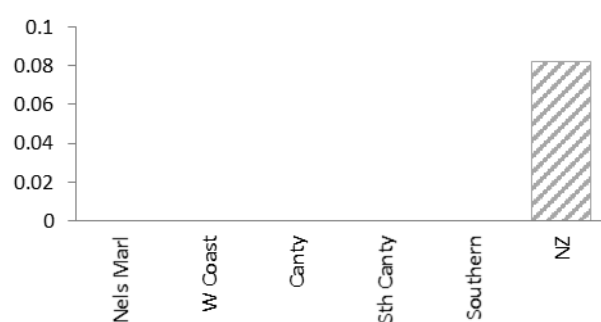
Invasive Pneumococcal Disease



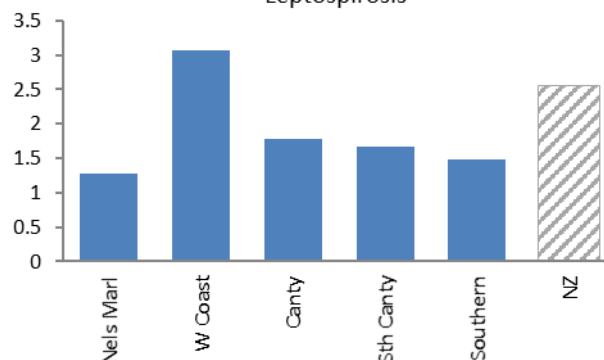
Legionellosis



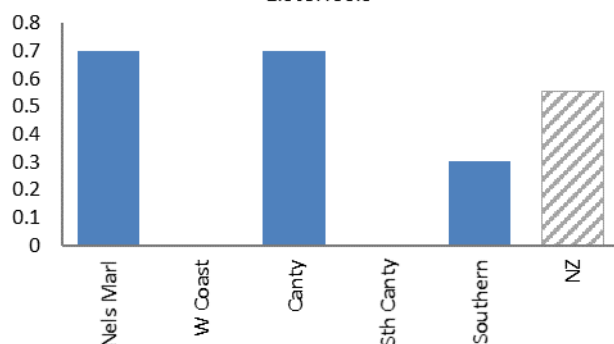
Leprosy



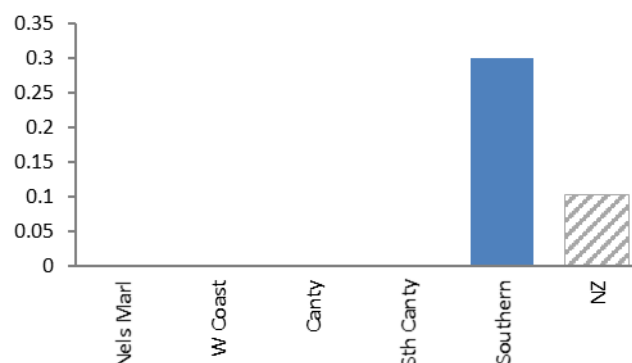
Leptospirosis



Listeriosis

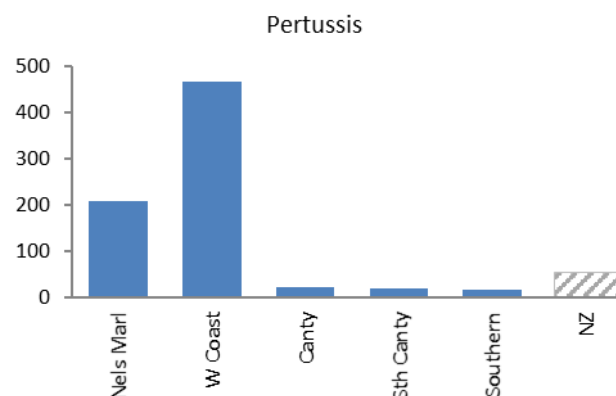
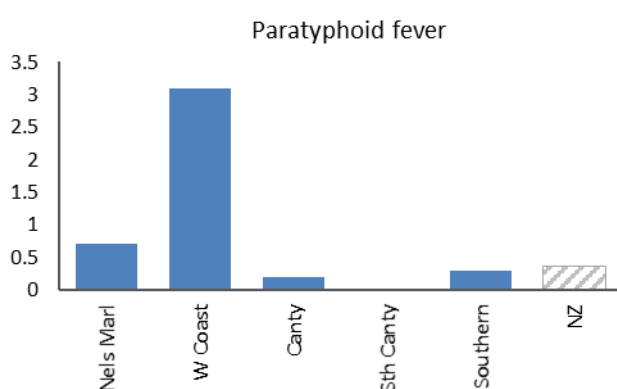
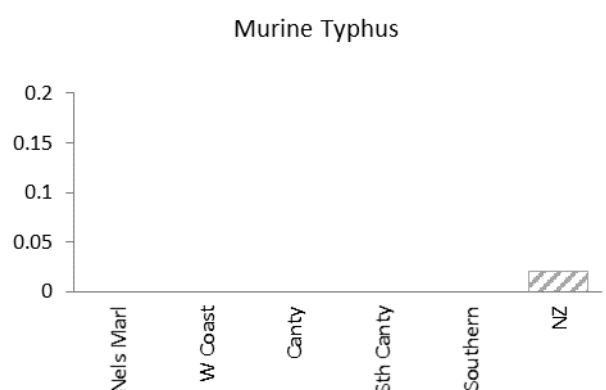
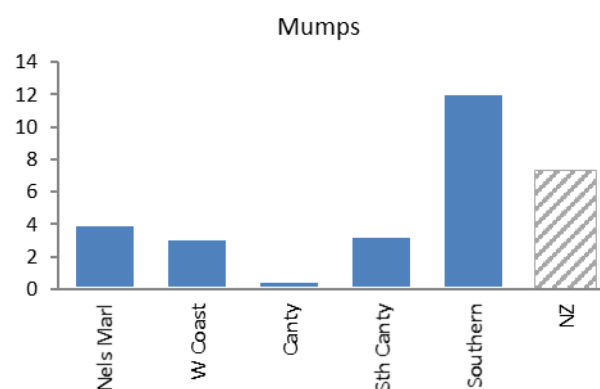
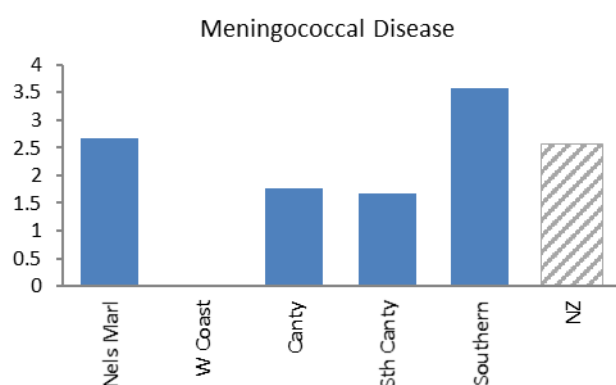
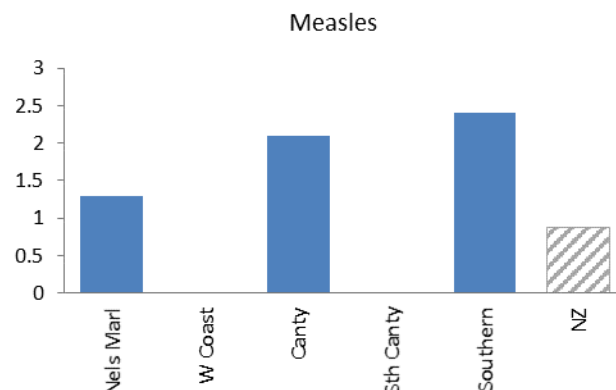
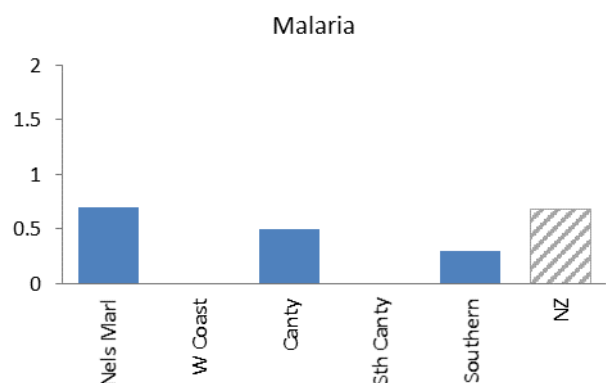


Listeriosis - Perinatal



## South Island Notifiable Disease Rates By DHB\*

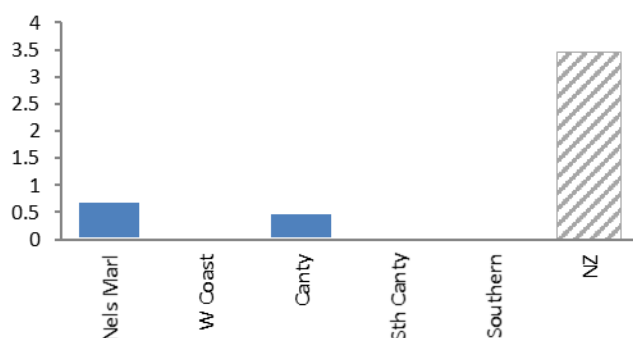
Notification Rates (per 100,000 population) By District Health Board for the 12 months to January 2019



## South Island Notifiable Disease Rates By DHB\*

Notification Rates (per 100,000 population) By District Health Board for the 12 months to January 2019

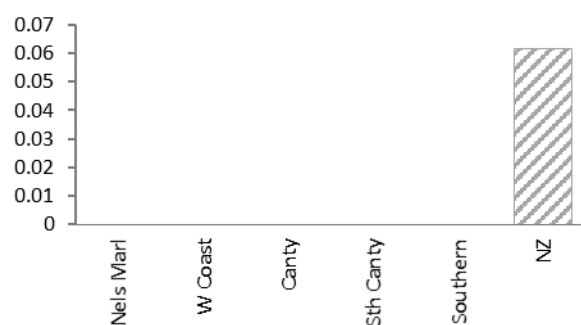
Rheumatic Fever - Initial Attack



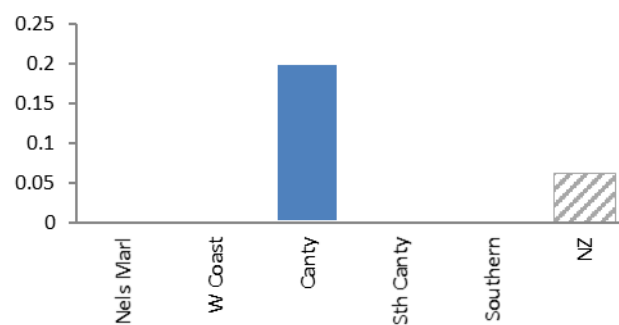
Rheumatic Fever - Recurrent Attack



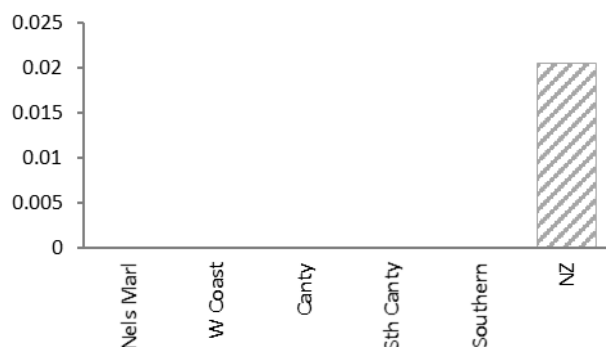
Rickettsial disease



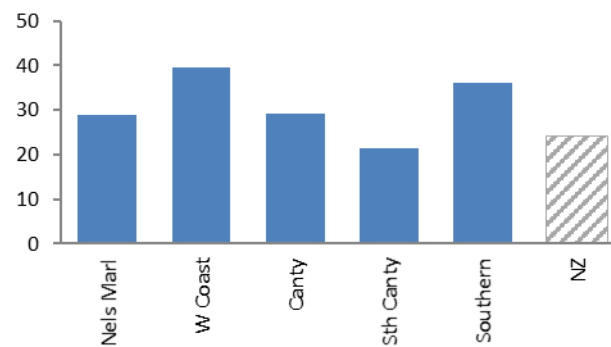
Ross River Virus



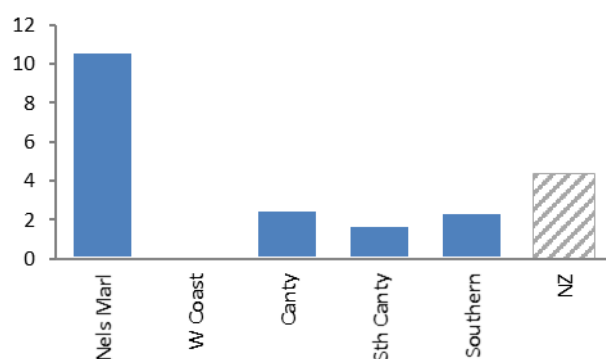
Rubella



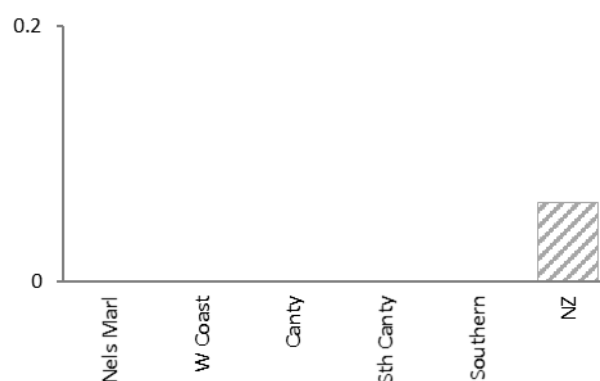
Salmonellosis



Shigellosis



Taeniasis



## South Island Notifiable Disease Rates By DHB\*

Notification Rates (per 100,000 population) By District Health Board for the 12 months to January 2019

